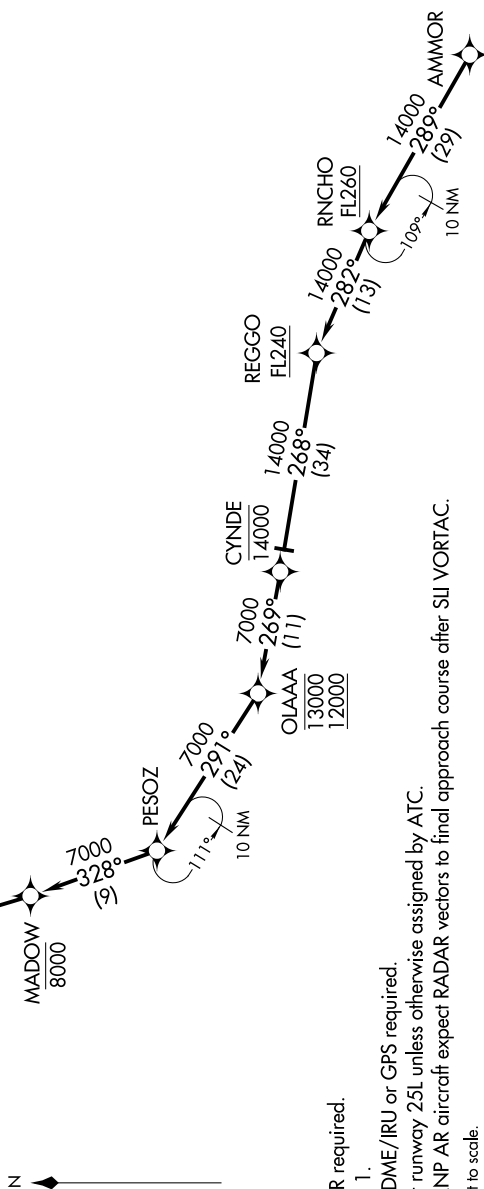


ARRIVAL ROUTE DESCRIPTION

From ANMOR on track 289° to cross RNCHO at or above FL260, then on track 282° to cross REGGO at or above FL240, then on track 268° to cross CYNDE at or below 14000, then on track 269° to cross OLAAA between 12000 and 13000, then on track 291° to cross PESOZ, then on track 328° to cross MADOW at or below 8000, then on track 331° to cross TOZEK at 7000, then on track 331° to cross SJJ VORTAC at 7000 and at 210K, then on track 326° to cross TIRNDO at 5000 and at 210K. Expect RADAR vectors to ILS or RNAV (RNP) RWY 25L final approach course.

LOST COMMUNICATIONS: In the event of lost communication, proceed on the RNAV (RNP) RWY 25L or the ILS or LOC RWY 25L approach.



NOTE: RADAR required.

NOTE: RNAV 1.

NOTE: DME/DME/IRU or GPS required.

NOTE: Expect runway 25L unless otherwise assigned by ATC.

NOTE: Non-RNP AR aircraft expect RADAR vectors to final approach course after SLI VORTAC.

NOTE: Chart not to scale.