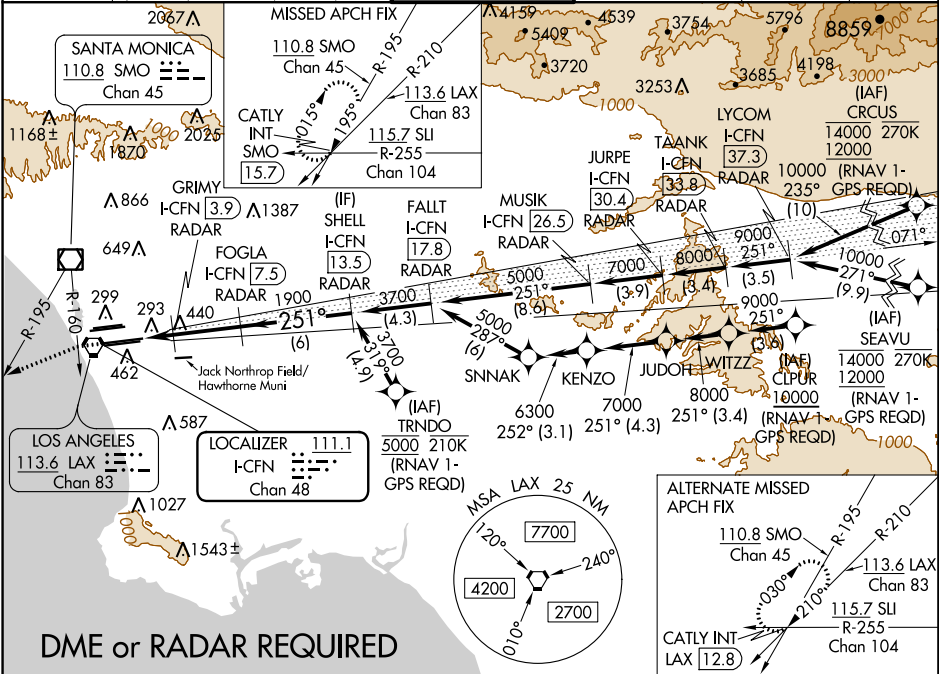


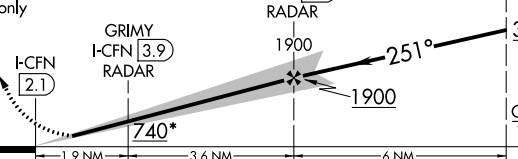
LOC/DME I-FCN	APP CRS	Rwy Idg	25R	25L
111.1	251°	11134	11095	
Chan 48		TDZE	104	104
		Apt Elev	128	128

ILS or LOC RWY 25R
LOS ANGELES INTL (LAX)

Simultaneous approach authorized. Simultaneous approach authorized with HHR. DME or RADAR required. For inop ALS increase Sidestep 25L Cat C visibility to 1½ SM. # RVR 1800 authorized with use of FD or AP or HUD to DA.	MALSR Rwy 25R	ALSF-2 Rwy 25L	MISSED APPROACH: Climb to 2000 on heading 251° until crossing SMO R-160 then left turn on heading 236° and SMO VOR/DME R-195 to CATLY INT/SMO 15.7 DME and hold.
--	------------------	-------------------	--

D-ATIS ARR 133.8 DEP 135.65	SOCAL APP CON 124.3 363.2 (APCH FM WEST) 124.5 235.975 (225°-044°)	LOS ANGELES TOWER 124.9 269.0 (090°-224°) N 133.9 239.3 S 120.95 379.1 (045°-089°)	GND CON N 121.65 327.0 S 121.75 327.0 W 121.4 327.0	CLNC DEL 120.35 327.0	CPDLC
---	--	--	---	---	-------



2000 hdg 251°	SMO R-160 hdg 236°	SMO CATLY INT	VGSI and ILS glidepath not coincident (VGSI Angle 3.00°/TCH 75°).	SHELL I-FCN [13.5] RADAR
*LOC only				
				
CATEGORY	A	B	C	D
S-ILS 25R#	304/24 200 (200-½)			
S-LOC 25R	700/24 596 (600-½)		700-1¼ 596 (600-1¼)	
SIDESTEP 25L	700/55 596 (600-1)		700-1½ 596 (600-1½)	

ELEV 128	TDZE 25R 104	TDZE 25L 104
TDZ/CL Rwy 6R, 7L, 24R, and 25L HIRL all Rwy's		
FAF to MAP 5.5 NM		
Knots	60	90 120 150 180
Min:Sec	5:30	3:40 2:45 2:12 1:50