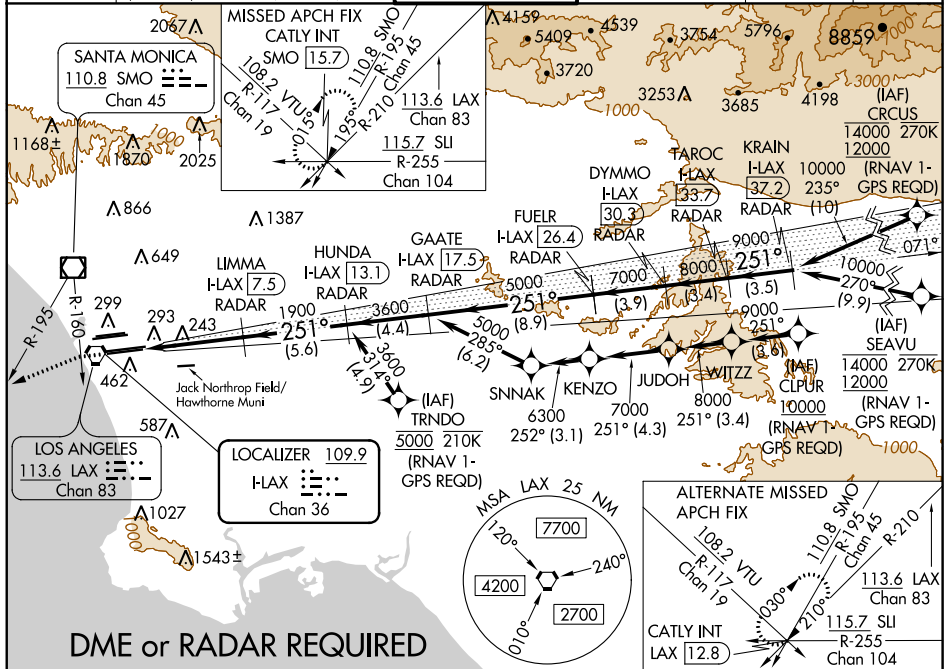


ILS RWY 25L (CAT II & III)
LOS ANGELES INTL (LAX)

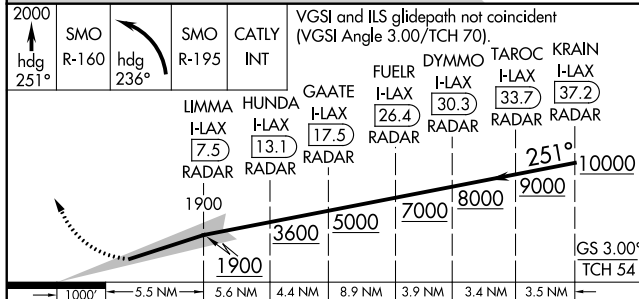
ALSF-2

MISSED APPROACH: Climb to 2000 on heading 251° until crossing the SMO R-160 then left turn on heading 236° and on the SMO R-195 to CATLY INT/SMO 15.7 DME and hold.

D-ATIS	SOCAL APP CON		LOS ANGELES TOWER	GND CON	CINC DEL	CPDLC
ARR 133.8	124.3 363.2 (APCH FM WES2)	124.9 269.0 (090°-224°)	N 133.9 239.3	N 121.65 327.0	120.35	
DEP 135.65	124.5 235.975 (122°-044°)	128.5 360.7 (045°-089°)	S 120.95 379.1	S 121.75 327.0 W 121.4 327.0	327.0	



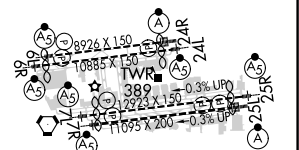
DME or RADAR REQUIRED



CATEGORY	A	B	C	D
S-ILS 25L	CAT II	RA 107/12	100 DA	204
S-ILS 25L		CAT III	RVR 06	

CATEGORY II & III ILS - SPECIAL AIRCREW
& AIRCRAFT CERTIFICATION REQUIRED

ELEV 128	D	TDZE 104
----------	----------	----------



TDZ/CL Rwy 6R, 7L, 24R, and 25L
HIRL all Rwy