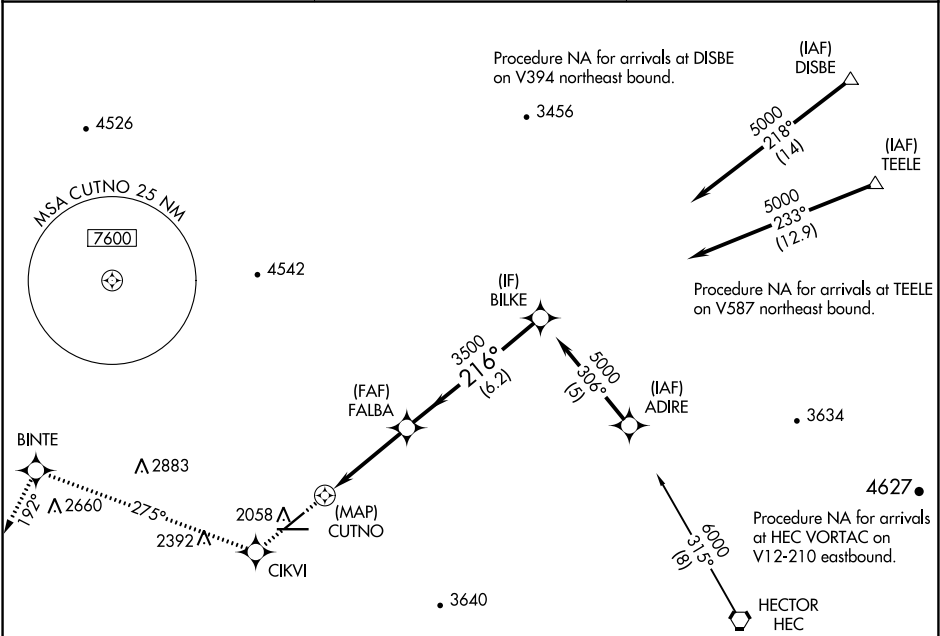


APP CRS	Rwy Idg	5123
216°	TDZE	1918
	Apt Elev	1930

RNAV (GPS) RWY 22
BARSTOW-DAGGETT (DAG)

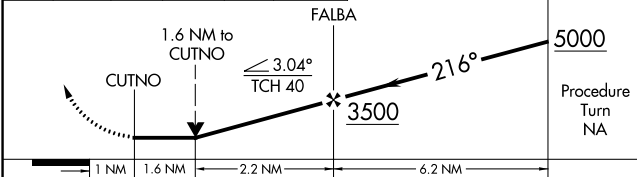
RNP APCH.	MISSED APPROACH: Climb to 8000 direct CIKVI and on track 275° to BINTE and on track 192° to NULMN and hold, continue climb-in-hold to 8000.
▼ ▲	

ASOS 132.175	LOS ANGELES CENTER 132.5 284.7	UNICOM 123.0 (CTAF) 1
-----------------	-----------------------------------	--------------------------

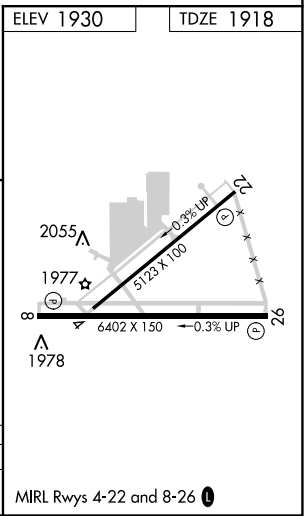


MISSED APCH FIX	ELEV 1930	TDZE 1918
NULMN 067° 247° 7 NM		

8000	CIKVI	tr 275°	BINTE	tr 192°	NULMN	VGSI and descent angles not coincident (VGSI Angle 3.00/TCH 49).
↑	✧		✧		△	



CATEGORY	A	B	C	D
LNVA MDA	2800-1¼ 882 (900-1¼)		2800-2¾ 882 (900-2¾)	2800-3 882 (900-3)



SW-3, 03 DEC 2020 to 31 DEC 2020

SW-3, 03 DEC 2020 to 31 DEC 2020