

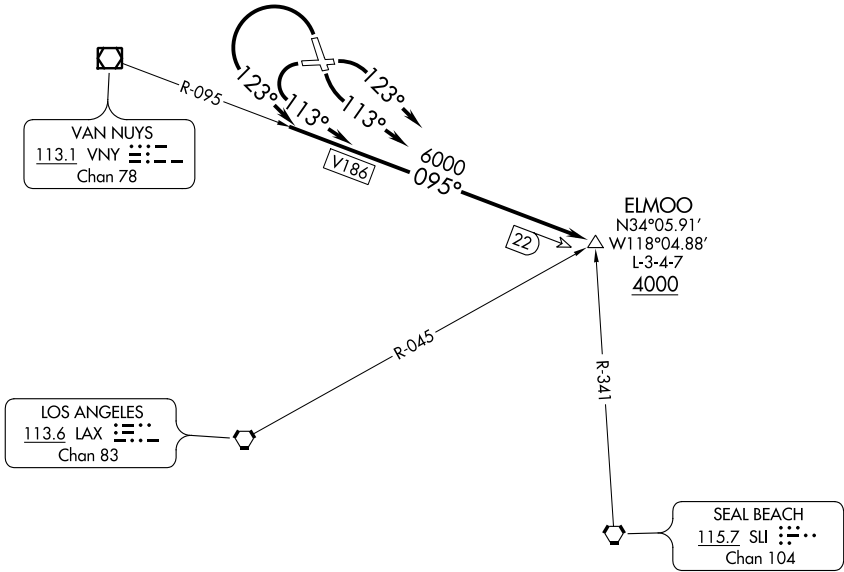
(ELMOO9.ELMOO) 19115
ELMOO NINE DEPARTURE

AL-67 (FAA)

BOB HOPE (BUR)
BURBANK, CALIFORNIA

CLNC DEL
118.0 348.6
CPDLC
SOCAL DEP CON
135.05 317.5

**TOP ALTITUDE:
ASSIGNED BY ATC**



TAKEOFF MINIMUMS

- Rwy 8: Standard with minimum climb of 380' per NM to 2500.
Rwy 15: Standard with minimum climb of 450' per NM to 3000.
Rwy 26: Standard with minimum climb of 305' per NM to 2600.
Rwy 33: 600-2¼ with minimum climb of 210' per NM to 4000
or standard with minimum climb of 450' per NM to 2600.

NOTE: Chart not to scale.

DEPARTURE ROUTE DESCRIPTION

- TAKEOFF RUNWAY 8: Climbing right turn heading 123° intercept VNY VOR/DME R-095 to ELMOO. . . .
TAKEOFF RUNWAY 15: Climbing left turn heading 113° intercept VNY VOR/DME R-095 to ELMOO. . . .
TAKEOFF RUNWAY 26: Climbing left turn heading 113° intercept VNY VOR/DME R-095 to ELMOO. . . .
TAKEOFF RUNWAY 33: Climbing left turn heading 123° intercept VNY VOR/DME R-095 to ELMOO. . . .

. . . .thence via assigned route. Maintain ATC assigned altitude.