

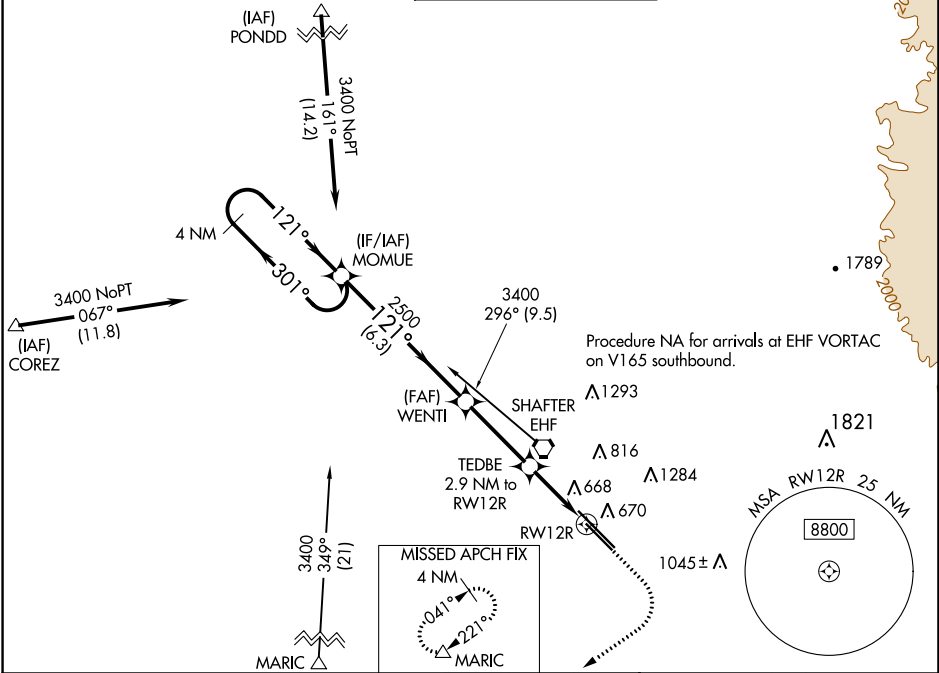
WAAS CH 61040 W12B	APP CRS 121°	Rwy Idg TDZE 7700 488 Apt Elev 510
--	------------------------	--

RNAV (GPS) RWY 12R

MEADOWS FIELD (BFL)

▼ For uncompensated Baro-VNAV systems, LNAV/VNAV NA below -1°C (31°F) or above 54°C (130°F). Circling NA northeast of Rwy 12L-30R. DME/DME RNP-0.3 NA.	MISSED APPROACH: Climb to 1000 then climbing right turn to 3500 direct MARIC and hold.
--	--

ATIS 118.6	BAKERSFIELD APP CON ★ 118.8 284.625 118.9 270.3 (SOUTH) (NORTH)	BAKERSFIELD TOWER ★ 118.1 (CTAF) 0 257.8	GND CON 121.7	UNICOM 122.95
----------------------	--	--	-------------------------	-------------------------



VGSI and RNAV glidepath not coincident (VGSI Angle 3.00/TCH 25).				1000	3500	MARIC	ELEV 510	TDZE 488
4 NM Holding Pattern MOMUE				↑	↷	△		
3400 ← 301° 121° →				* LNAV only				
GP 3.00° TCH 50								
2500								
6.3 NM								
3.3 NM								
1.6 NM								
1.3 NM								
CATEGORY	A	B	C	D				
LPV DA	738-¾ 250 (300-¾)							
LNAV/ VNAV DA	969-1⅝ 481 (500-1⅝)							
LNAV MDA	920-1	432 (500-1)	920-1¼	432 (500-1¼)				
CIRCLING	960-1	450 (500-1)	960-1½ 450 (500-1½)	1060-2 550 (600-2)				

Diagram illustrating the approach path and altitudes:

- Altitude 513 A
- Altitude 562 A
- Altitude 580 TWR
- Distances: 0.4 NM DOWN, 1.3 NM DOWN, 0.3 NM UP, 0.3 NM UP
- Distances: 121° to RW12R, 10842 x 10, 788 x 100
- Distances: 301° to RW12R, 301° to RW12R