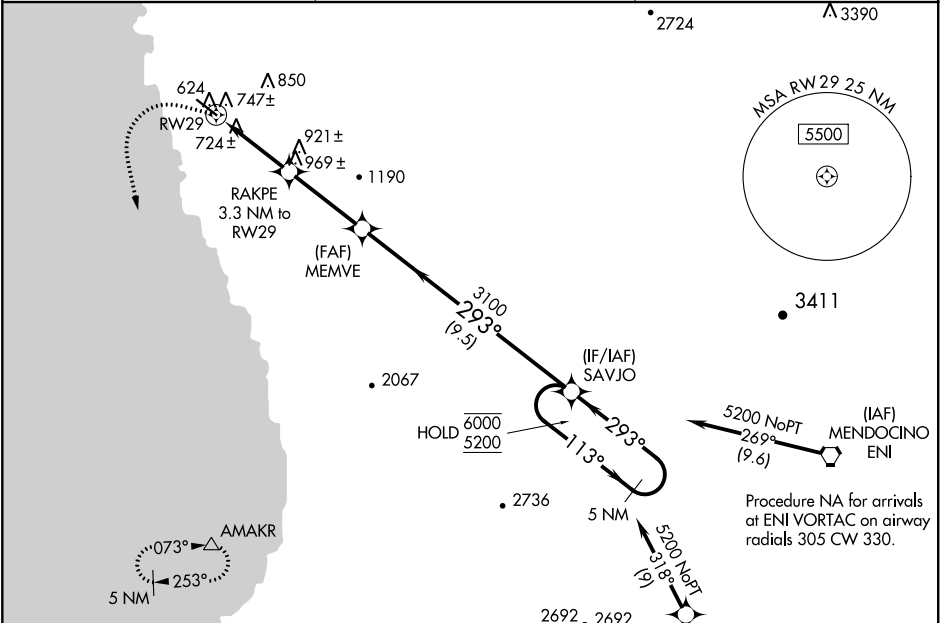


WAAS CH <b>77829</b> <b>W29A</b>	APP CRS <b>293°</b>	Rwy Idg TDZE Apt Elev	<b>5249</b> <b>574</b> <b>574</b>
--	------------------------	-----------------------------	---

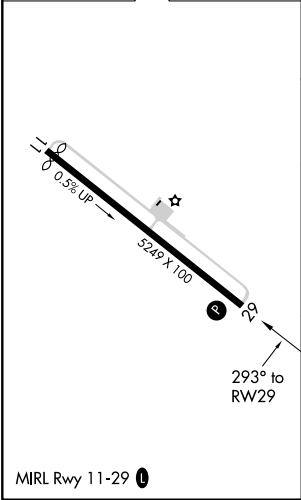
RNAV (GPS) RWY 29  
LITTLE RIVER (LLR)







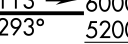

RNP APCH.	MISSED APPROACH: Climbing left turn to 6000 direct AMAKR and hold, continue climb-in-hold to 6000.
<p>◀ Circling NA northeast of Rwy 11-29. Procedure NA at night. Rwy 29 helicopter visibility reduction below 1 SM NA.</p>	

AWOS-AV <b>121.125</b>	OAKLAND CENTER <b>132.2 350.3</b>	AUNICOM <b>122.7 (CTAF) 0</b>
---------------------------	--------------------------------------	----------------------------------



ELEV 574	TDZE 574
----------	----------



		AMAKR 		VGSI and descent angles not coincident (VGSI Angle 3.50/TCH 42).		5 NM Holding Pattern			
		RAKPE 3.3 NM to RW29		MEMVE		SAVJO			
									
3.3 NM		3.3 NM		9.5 NM					
CATEGORY		A		B		C		D	
LP MDA		980-1		406 (500-1)		980-1 1/8		406 (500-1 1/8)	
LNAV MDA		1000-1		426 (500-1)		1000-1 1/4		426 (500-1 1/4)	
 CIRCLING		1040-1		466 (500-1)		1080-1 1/2 506 (600-1 1/2)		1400-2 3/4 826 (900-2 3/4)	