

APP CRS
322°

Rwy Idg **2443**
TDZE **7**
Apt Elev **7**

RNAV (GPS) RWY 31
PALO ALTO (PAO)

RNP APCH

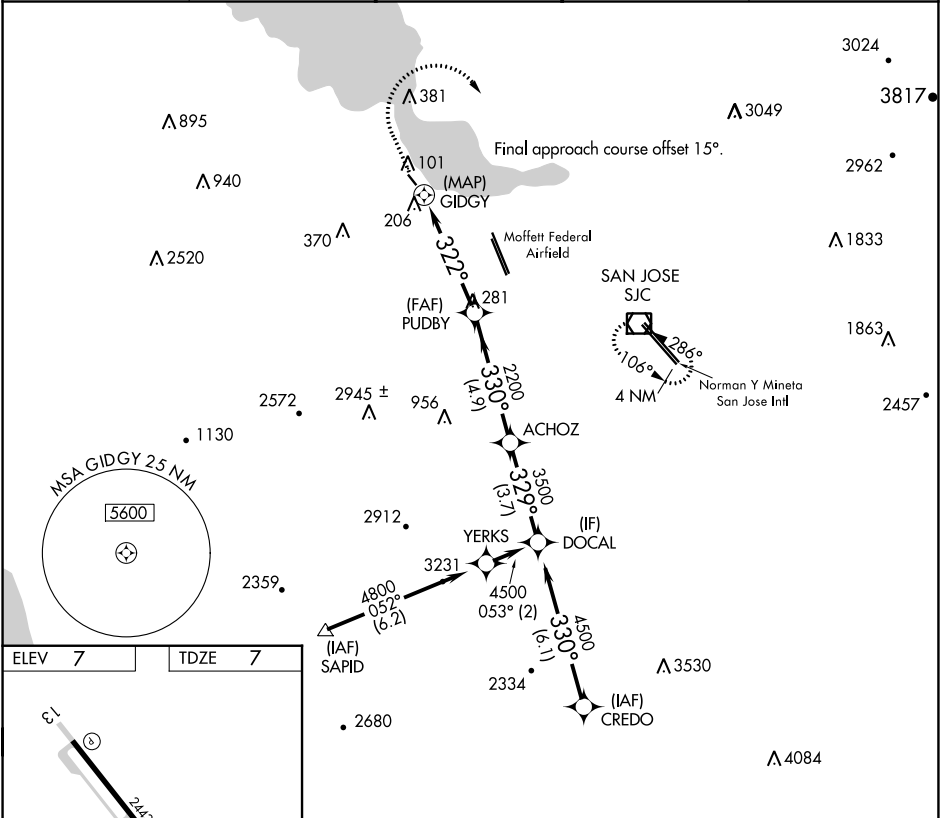
▼

▲

Circling NA southwest of Rwy 13-31. Rwy 31 helicopter visibility reduction below 1 SM NA. Procedure NA at night. When control tower closed, use Norman Y Mineta San Jose Intl altimeter setting and increase all MDAs 40 feet.

MISSED APPROACH: Climb to 1400 then climbing right turn to 3000 direct SJC VOR/DME and hold.

ATIS 135.275	NORCAL APP CON 121.3 270.35	PALO ALTO TOWER★ 118.6 (CTAF)	GND CON 125.0	UNICOM 122.95
------------------------	---------------------------------------	---	-------------------------	-------------------------



ELEV 7

TDZE 7

REIL Rws 13 and 31
MIRL Rwy 13-31

1400	3000	SJC

GIDGY

PUDBY

ACHZOZ

DOCAL

0.5

4.6 NM

4.9 NM

3.7 NM

CATEGORY	A	B	C	D
LNAV MDA	460-1	453 (500-1)	NA	
CIRCLING	460-1 453 (500-1)	520-1 513 (600-1)	NA	