

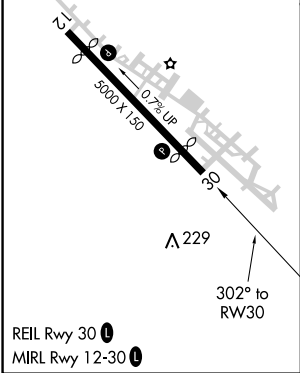
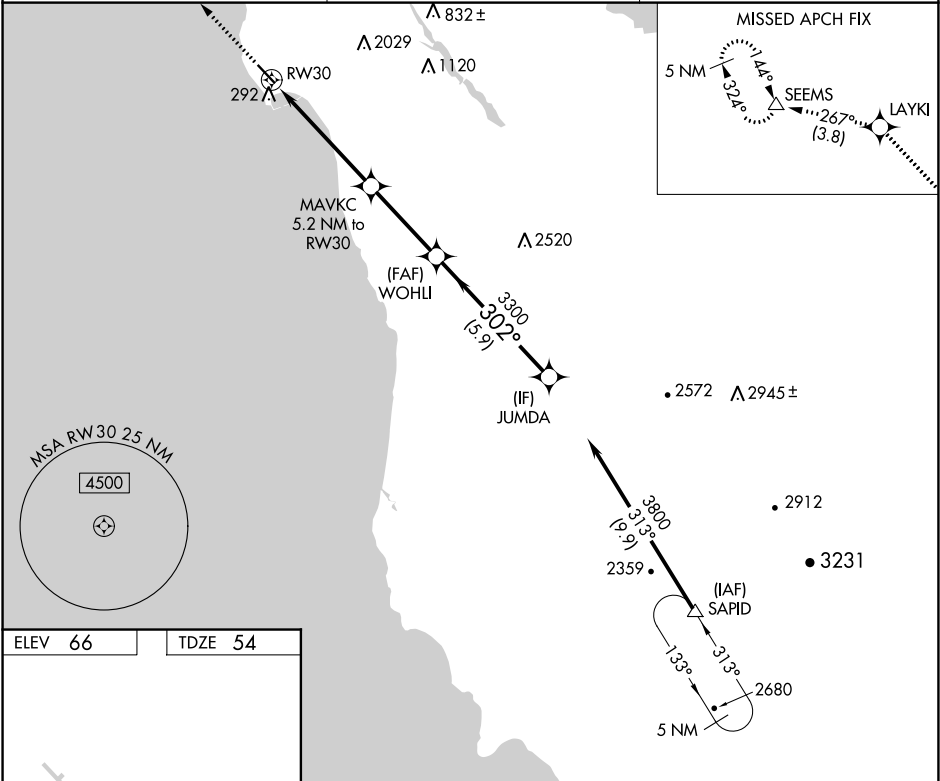
WAAS CH 50302 W30A	APP CRS 302°	Rwy Idg TDZE 54 Apt Elev 66
--	------------------------	---

RNAV (GPS) RWY 30

HALF MOON BAY (HAF)

RNP APCH.	MISSED APPROACH: Climb to 4000 direct LAYKI and on track 267° to SEEMS and hold, continue climb-in-hold to 4000.
-----------	--

AWOS-3 127.275	NORCAL APP CON 135.1 307.2	UNICOM 122.8 (CTAF) 1
--------------------------	--------------------------------------	---------------------------------



4000	LAYKI	tr 267°	SEEMS	VGSI and RNAV glidepath not coincident (VGSI Angle 3.00/TCH 24).	JUMDA
*RNAV only			MAVKC 5.2 NM to RW30		WOHLI
					JUMDA
					3300
					3800
					302°
					3300
					2020*
					GP 3.50°
					TCH 40
					1.8 NM
					3.4 NM
					3.4 NM
					5.9 NM
CATEGORY	A	B	C	D	
LPV	DA	381-1	327 (400-1)		
RNAV MDA	620-1	566 (600-1)	620-1½	566 (600-1½)	