

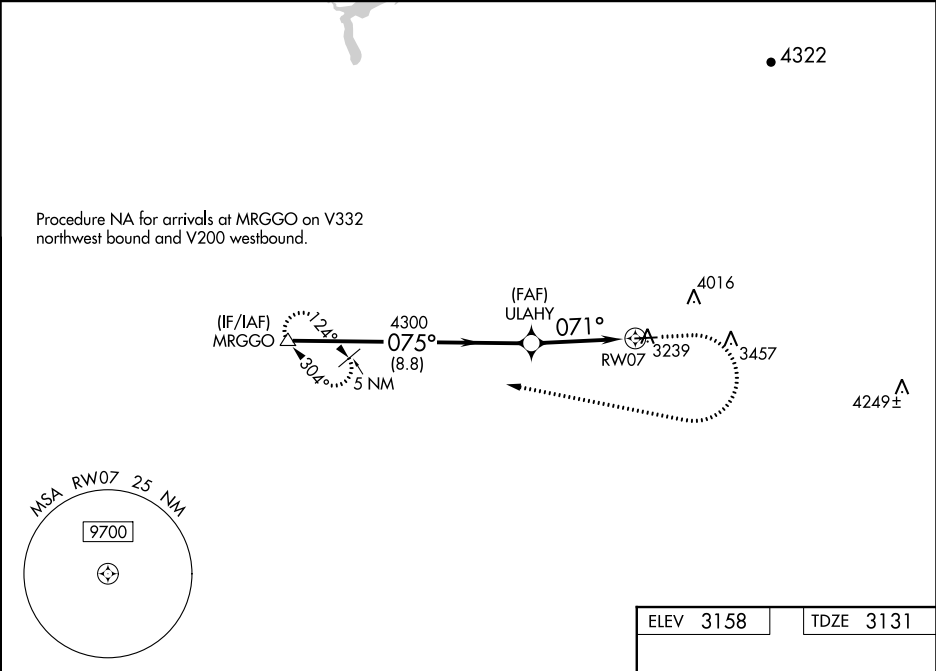
WAAS CH <b>90240</b> <b>W07A</b>	APP CRS <b>071°</b>	Rwy Idg TDZE Apt Elev <b>4657</b> <b>3131</b> <b>3158</b>
--	------------------------	--

RNAV (GPS) RWY 7

NEVADA COUNTY (GOO)

RNP APCH.	MISSED APPROACH: (Do not exceed 250K until MRGGO) Climb to 3900 then climbing right turn to 6000 direct MRGGO and hold.
<div><div>▼</div><div>▲</div></div> <div>Circling NA north of Rwy 7-25. Rwy 7 helicopter visibility reduction below ¾ SM NA. For uncompensated Baro-VNAV systems, LNAV/VNAV NA below -21°C or above 54°C.</div>	

AWOS-3 <b>121.325</b>	NORCAL APP CON <b>125.4 259.1</b>	UNICOM <b>122.725 (CTAF) 0</b>
--------------------------	--------------------------------------	-----------------------------------



MRGGO		3900		6000		MRGGO	
5000		075°		4300		071°	
GP 3.00° TCH 40		4300		RW07			
8.8 NM		3.7 NM					
CATEGORY	A	B	C	D			
LPV DA	3606-1⅜		475 (500-1⅜)				
LNAV/ VNAV DA	3772-1⅞		641 (700-1⅞)				
LNAV MDA	3860-1	729 (800-1)		3860-2	729 (800-2)		
CIRCLING	3860-1	702 (800-1)		3880-2 722 (800-2)	3880-2¼ 722 (800-2¼)		

ELEV 3158

TDZE 3131

071° to RW07

1.9% UP → 4657 X 75

25

REIL Rwys 7 and 25  
MIRL Rwy 7-25 0