

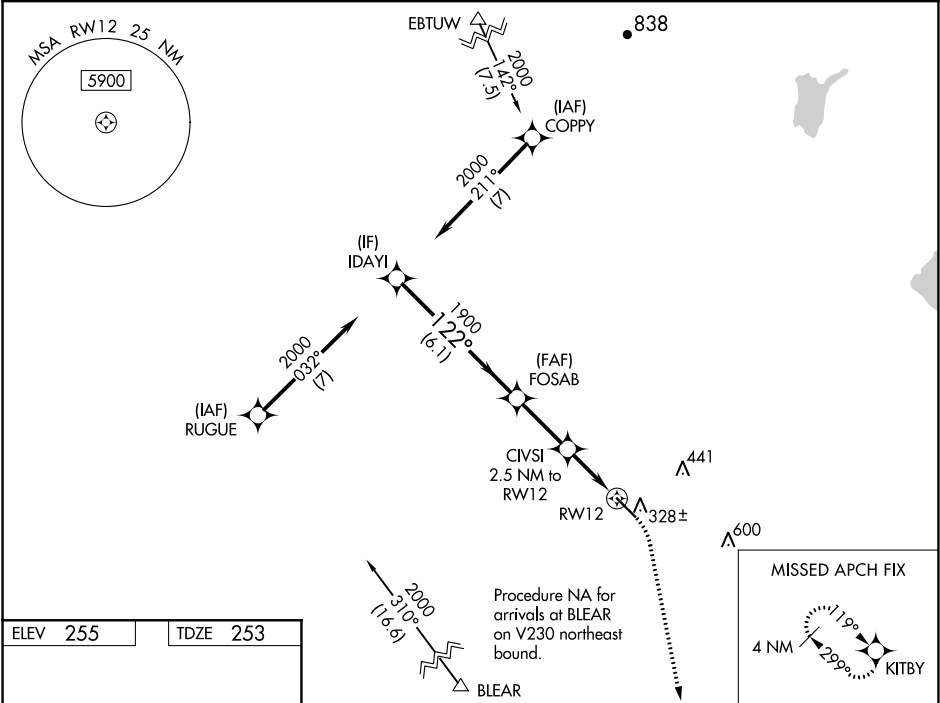
WAAS CH <b>62909</b> <b>W12A</b>	APP CRS <b>122°</b>	Rwy Idg TDZE Apt Elev	<b>5545</b> <b>253</b> <b>255</b>
--	------------------------	-----------------------------	---

RNAV (GPS) RWY 12

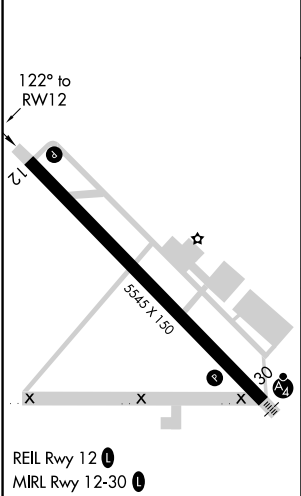
MADERA MUNI (M.A.E.)

RNP APCH.	MISSED APPROACH: Climb to 800 then climbing right turn to 2000 direct KITBY and hold.
Circling NA to Rwy 8 and 26. For uncompensated Baro-VNAV systems, LNAV/VNAV NA below -3°C or above 54°C.	

ASOS <b>134.725</b>	FRESNO APP CON <b>119.45</b>	CLNC DEL <b>119.45</b>	UNICOM <b>122.8</b> (CTAF) <b>0</b>
------------------------	---------------------------------	---------------------------	--



ELEV 255	TDZE 253
----------	----------



IDAY1		VGSi and RNAV glidepath not coincident (VGSi Angle 3.00/TCH 34).		800	2000	KITBY
2000		FOSAB		*0.9 NM to RWY12		
1900		CIVSI 2.5 NM to RWY12		*LNNAV only		
GP 3.00° TCH 35		*1080				
6.1 NM		2.6 NM		0.9 NM		
CATEGORY	A	B	C	D		
LPV	DA	503-¾	250 (300-¾)	NA		
LNNAV/ VNAV	DA	503-¾	250 (300-¾)	NA		
LNNAV	MDA	580-1	327 (400-1)	NA		
CIRCLING		680-1 425 (500-1)	720-1 465 (500-1)	740-1½ 485 (500-1½)	NA	

SW-2, 03 DEC 2020 to 31 DEC 2020

SW-2, 03 DEC 2020 to 31 DEC 2020