

(SOKOY3.SOKOY) 17229  
SOKOY THREE DEPARTURE

AL-6094 (FAA)

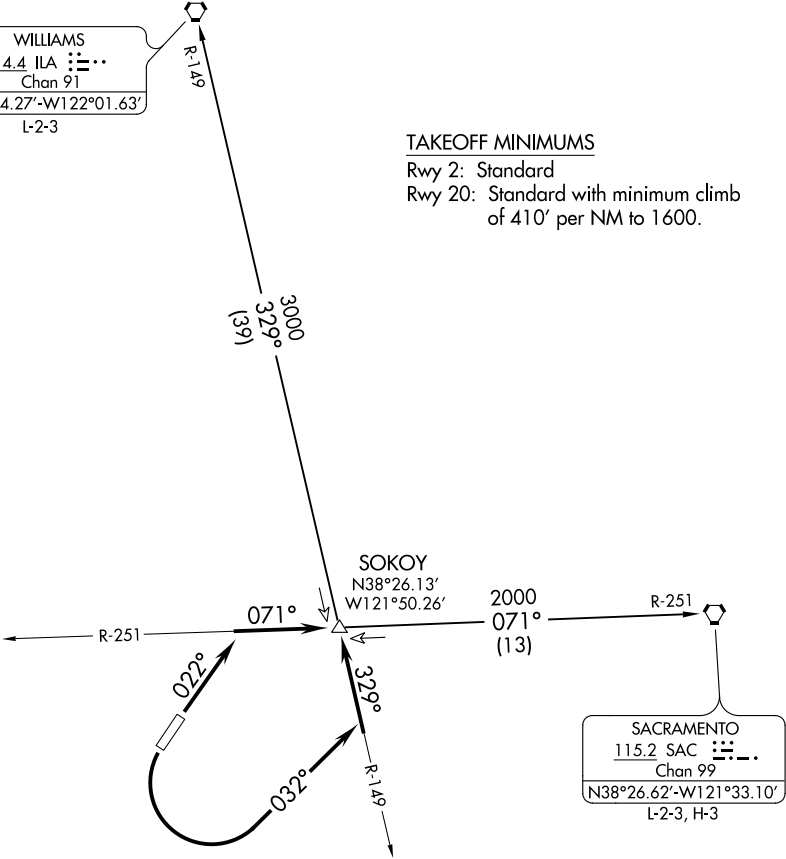
NUT TREE (VCB)  
VACAVILLE, CALIFORNIA

TRAVIS DEP CON  
128.4 281.45

**TOP ALTITUDE:  
ASSIGNED BY ATC**

WILLIAMS  
114.4 ILA  
Chan 91  
N39°04.27'-W122°01.63'  
L-2-3

TAKEOFF MINIMUMS  
Rwy 2: Standard  
Rwy 20: Standard with minimum climb  
of 410' per NM to 1600.



NOTE: Chart not to scale.

**DEPARTURE ROUTE DESCRIPTION**

- TAKEOFF RUNWAY 2: Climb via heading 022°, intercept SAC R-251 to SOKOY/  
SAC 13 DME.
- TAKEOFF RUNWAY 20: Turn left heading 032°, intercept ILA R-149 to SOKOY/  
ILA 39 DME.
- SACRAMENTO TRANSITION (SOKOY3.SAC): From over SOKOY on SAC R-251 to  
SAC VORTAC.
- WILLIAMS TRANSITION (SOKOY3.ILA): From over SOKOY on ILA R-149 to  
ILA VORTAC.