

WAAS CH 53740 W20A	APP CRS 201°	Rwy Idg 4700 TDZE 117 Apt Elev 117
--	------------------------	---

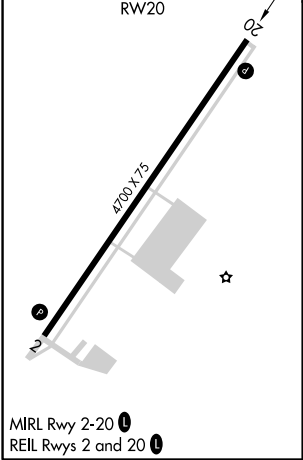
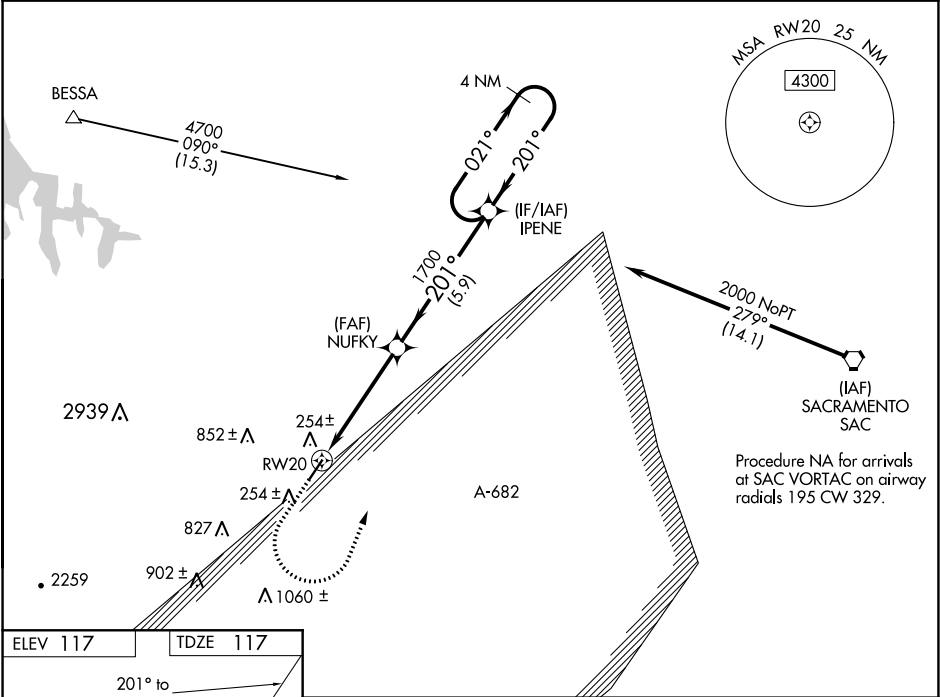
RNAV (GPS) RWY 20

NUT TREE (VCB)

V Circling Rwy 2 NA at night. For uncompensated Baro-VNAV systems, LNAV/VNAV NA below -5°C (23°F) or above 54°C (130°F). DME/DME RNP-0.3 NA. Circling NA west of Rwy 2-20.

MISSED APPROACH: Climb to 520 then climbing left turn to 2100 direct IPENE and hold. # Missed approach requires minimum climb of 229 feet per NM to 1300.

ASOS 134.75	TRAVIS APP CON 128.4 281.45	(CTAF) 122.85 0
-----------------------	---------------------------------------	---------------------------



520

↑

2100

↖

IPENE

✦

VGSI and RNAV glidepath not coincident (VGSI Angle 3.75/TCH 27).

4 NM Holding Pattern

*LNAV only.

RW20

↘

1.5 NM

↘

3.4 NM

↘

5.9 NM

↘

NUFKY

1700

↖

201°

1700

↖

201°

IPENE

↗

021°

↖

201°

2000

GP 3.00°
TCH 40

CATEGORY	A	B	C	D
LPV DA#		367-7/8	250 (300-7/8)	
LPV DA		384-7/8	267 (300-7/8)	
LNAV/VNAV DA		614-13/4	497 (500-13/4)	
LNAV MDA	720-1	603 (700- 1)	720-13/4	603 (700-13/4)
CIRCLING	720-1	603 (700-1)	960-21/2 843 (900-21/2)	1360-3 1243 (1300-3)