


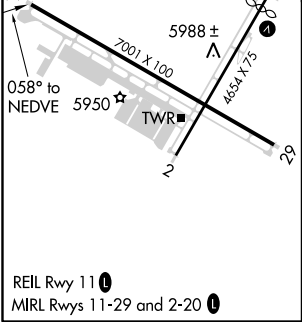
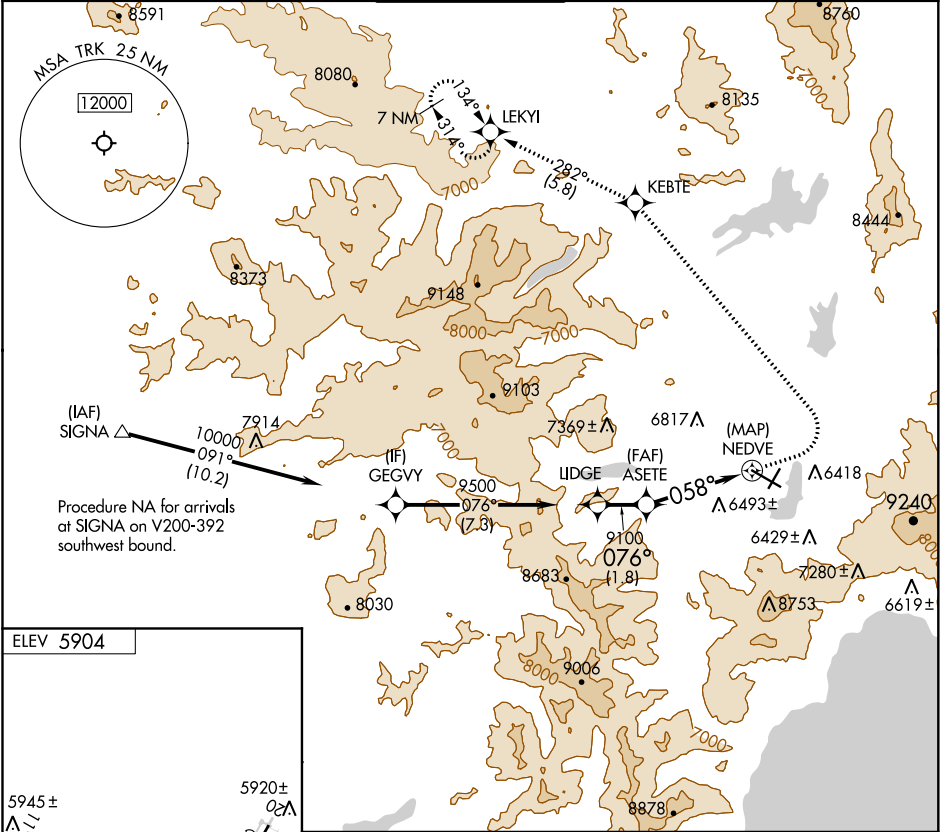


APP CRS	Rwy ldg	N/A
058°	TDZE	N/A
	Apt Elev	5904

RNAV (GPS)-A
TRUCKEE-TAHOE (TRK)

RNP APCH.	MISSED APPROACH: (Do not exceed 200K until KEBTE) Climb to 7800 then climbing left turn to 12000 direct KEBTE and track 282° to LEKYI and hold, continue climb-in-hold 12000.			
	Circling NA for Cat C south of Rwy 29 and east of Rwy 2.			
	Procedure NA at night. When local altimeter setting not received, procedure NA.			
	-18°C			

AWOS-3PT	OAKLAND CENTER	TRUCKEE TOWER*	GND CON	UNICOM
118.0	127.95 316.1	120.575 (CTAF) 0	118.3	122.95



<div><div><div><div><div>7800</div><div>↑</div></div></div><div><div><div>12000</div><div>↶</div></div></div><div><div><div>KEBTE</div><div>✦</div></div></div><div><div><div>tr 282°</div></div></div><div><div><div>LEKYI</div><div>✦</div></div></div></div></div>				
<div><div><div><div>LIDGE</div><div>9500</div></div><div><div>ASETE</div><div>9100</div></div><div><div>NEDVE</div></div></div><div><div><div>076°</div><div>058°</div></div></div><div><div><div>1.8 NM</div><div>4 NM</div></div></div></div>				
CATEGORY	A	B	C	D
<div><div><div>CIRCLING</div></div></div>	<div><div>7500-1¼</div><div>1596 (1600-1¼)</div></div>	<div><div>7500-1½</div><div>1596 (1600-1½)</div></div>	<div><div>7700-3</div><div>1796 (1800-3)</div></div>	NA