

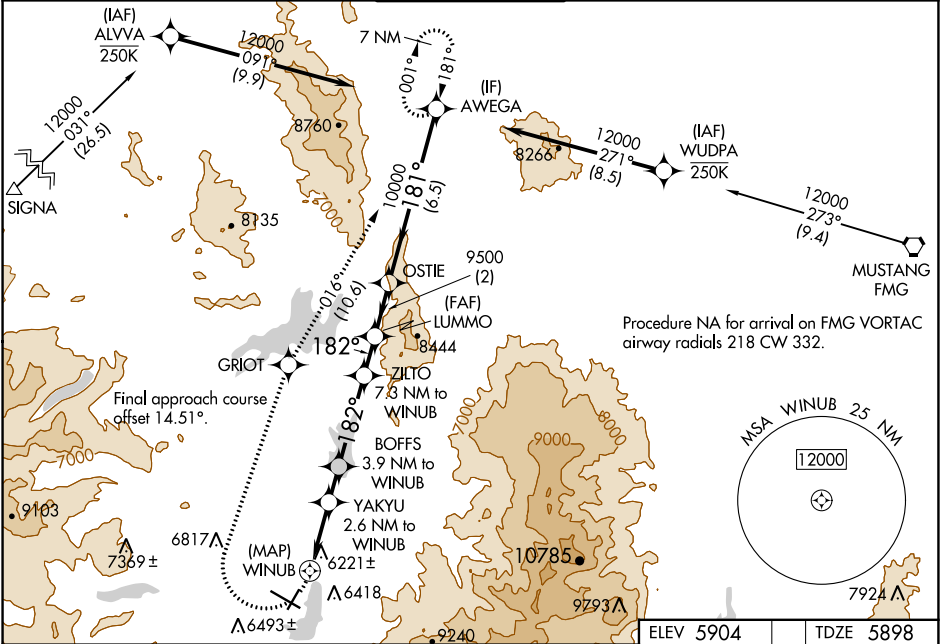
WAAS CH 87135 W20A	APP CRS 182°	Rwy Idg TDZE Apt Elev	4539 5898 5904
--	------------------------	-----------------------------	---

RNAV (GPS) RWY 20

TRUCKEE-TAHOE (TRK)

RNP APCH.	MISSED APPROACH: (Do not exceed 200K until GRIOT) Climbing right turn to 12000 direct GRIOT and on track 016° to AWEGA and hold, continue climb-in-hold to 12000. *Missed approach requires minimum climb of 270 feet per NM to 7700.
<div><div><div></div><div></div><div></div></div><div>Circling to Rwy 2, 11, 29 NA at night. Circling NA for Cat C south of Rwy 29 and east of Rwy 2. Rwy 20 helicopter visibility reduction below ¾ SM NA. When local climeter setting not received, procedure NA.</div></div>	

AWOS-3PT 118.0	OAKLAND CENTER 127.95 316.1	TRUCKEE TOWER * 120.575 (CTAF) 0	GND CON 118.3	UNICOM 122.95
--------------------------	---------------------------------------	---	-------------------------	-------------------------



12000	GRIOT	tr 016°	AWEGA	VGSI and descent angles not coincident (VGSI Angle 3.50/TCH 25).							
				0.8	0.7	1.9 NM	1.3 NM	3.4 NM	1.5 NM	2 NM	6.5 NM
CATEGORY		A		B		C		D			
LP	MDA*	6480-1		582 (600-1)		6480-1¾		582 (600-1¾)		NA	
LP	MDA	6780-1¼		882 (900-1¼)		6780-2½		882 (900-2½)		NA	
LNAV	MDA	7120-1¼		7120-1½		7120-3		1222 (1300-3)		NA	
CIRCLING		7120-1¼		7220-1½		7700-3		1216 (1300-1¼)		1316 (1400-1½)	
		1216 (1300-1¼)		1316 (1400-1½)		1796 (1800-3)				NA	

