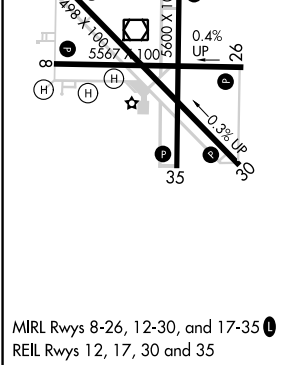
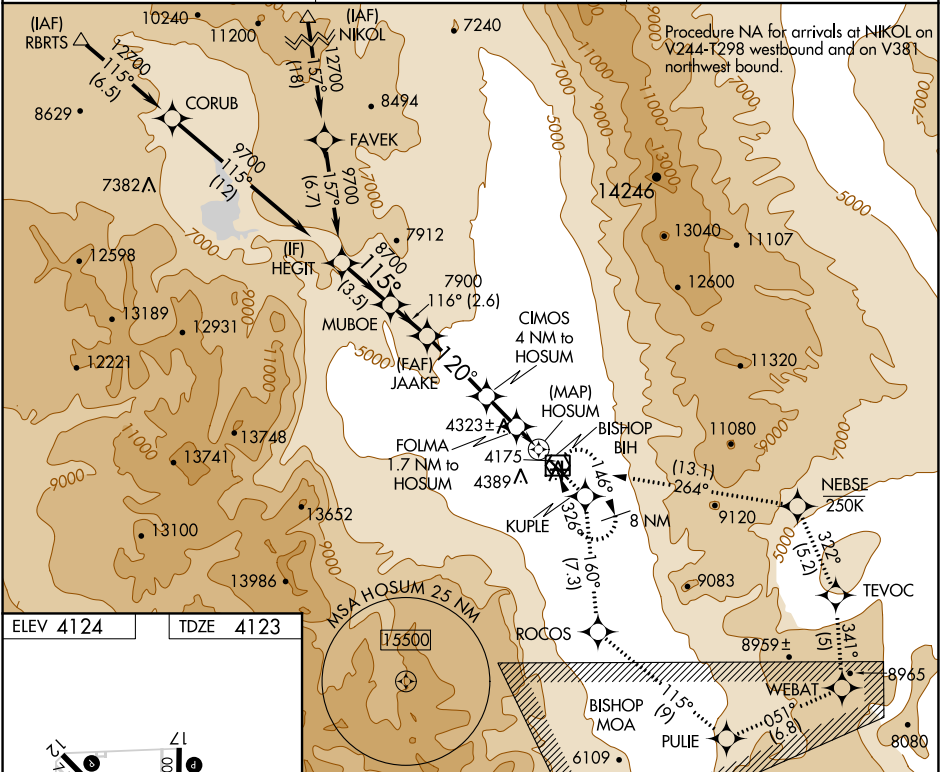


APP CRS	Rwy Idg
120°	7498
	TDZE
	4123
	Apt Elev
	4124

RNAV (GPS) Z RWY 12
BISHOP (BIH)

<p>⚠ DME/DME RNP-0.3 NA</p> <p>⚠ Missed approach requires minimum climb of 325 feet per NM to 11000; if unable, see RNAV (GPS) Y RWY 12.</p>	<p>MISSED APPROACH: (Do not exceed 250 KIAS until NEBSE) Climb to 13000 direct KUPLE and on track 160° to ROCOS and on track 115° to PULIE and on track 051° to WEBAT and on track 341° to TEVOC and on track 322° to NEBSE and on track 264° to BIH VOR/DME and hold.</p>
--	--

ASOS 119.025	OAKLAND CENTER 125.75 284.65	UNICOM 123.0 (CTAF) 0
-----------------	---------------------------------	---------------------------------



Visual Segment - Obstacles.			
HEGIT	MUBOE	JAAKE	KUPLE
9700	8700	7900	6200
115°	116°	120°	160°
3.5 NM	2.6 NM	4.5 NM	2.3 NM
CATEGORY	A	B	C
LNAV MDA	4580-1¼	457 (500-1¼)	NA
CIRCLING	6420-1¼ 2296 (2300-1¼)	6420-1½ 2296 (2300-1½)	6420-3 2296 (2300-3)