

APP CRS	Rwy Idg	7498
301°	TDZE	4111
	Apt Elev	4124

RNAV (RNP) RWY 30
BISHOP (BIH)

RNP AR APCH, RF required.

T
A_{NA} For uncompensated Baro-VNAV systems, procedure NA below -12°C or above 54°C.

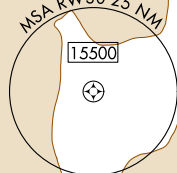
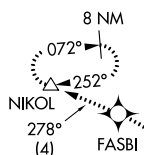
MISSED APPROACH: Climb to 13000 via 301° track to CASPU, right turn to GULSE, 350° track to HARVU, left turn to JARUT, 323° track to KIPSE, right turn to MOTSE, 345° track to NUBIC, left turn to FASBI, 278° track to NIKOL and hold.

ASOS
119.025

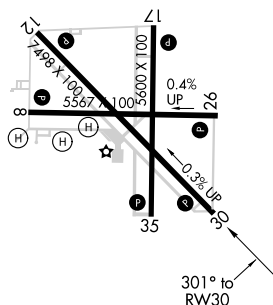
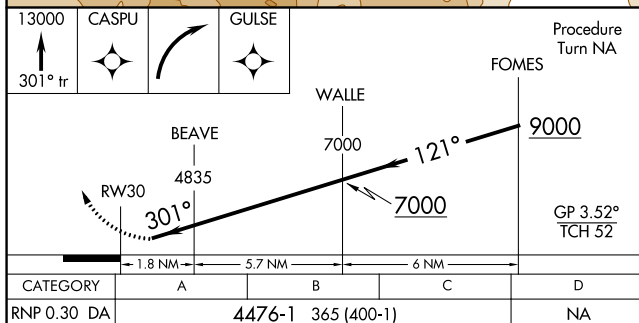
OAKLAND CENTER
125.75 284.65

UNICOM
123.0 (CTAF) **L**

MISSED APCH FIX



Procedure NA for arrivals at EVERR
via V381 northwest bound.



AUTHORIZATION REQUIRED

MIRL Rwy 8-26, 12-30, and 17-35 **L**
REIL Rwy 12, 17, 30 and 35