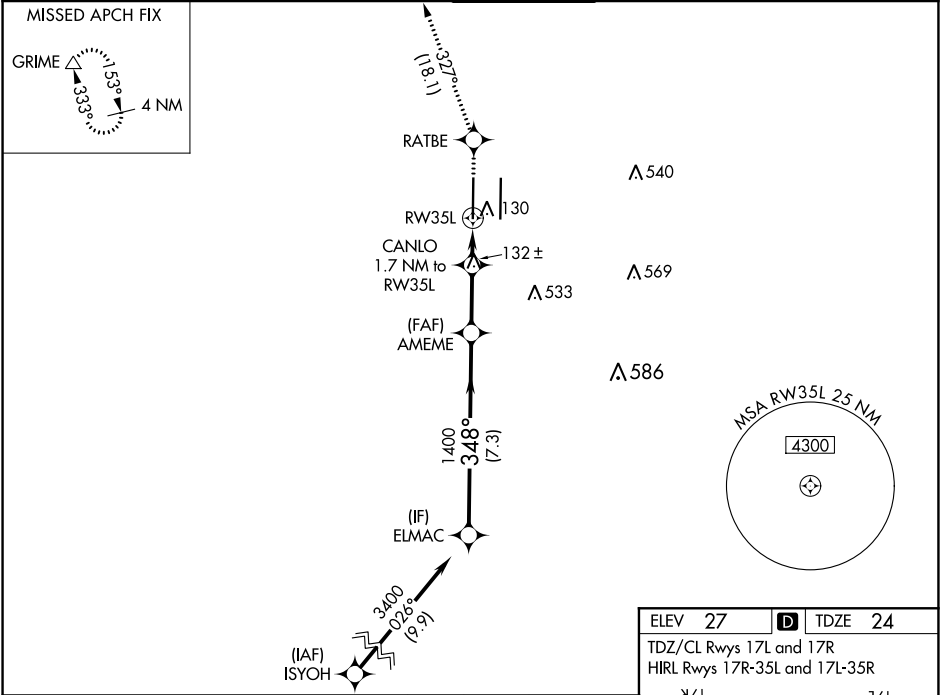


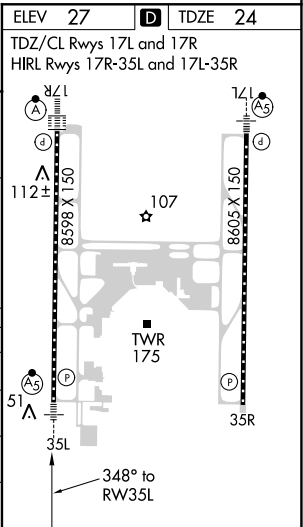
WAAS CH <b>86602</b> <b>W35A</b>	APP CRS <b>348°</b>	Rwy Idg TDZE Apt Elev	<b>8598</b> <b>24</b> <b>27</b>
--	------------------------	-----------------------------	---------------------------------------

RNAV (GPS) Y RWY 35L  
SACRAMENTO INTL (SMF)

RNP APCH.		MALSR		MISSED APPROACH: Climb to 2000 direct RATBE and track 327° to GRIME and hold.	
▼ Circling NA east of Rwy 17R-35L. For uncompensated Baro-VNAV systems, LNAV/VNAV NA below -4°C or above 54°C. For inop ALS, increase LPV all Cats visibility to RVR 4000 and LNAV Cat C/D visibility to RVR 5500. # RVR 1800 authorized with use of FD or AP or HUD to DA.					
D-ATIS <b>126.75</b>	NORCAL APP CON		CAPITOL TOWER	GND CON	CLNC DEL
	<b>125.4 259.1 (W-NE) 125.25 257.9 (SW) 127.4 317.5 (E-SE)</b>		<b>125.7 256.7</b>	<b>121.7 256.7</b>	<b>121.1 256.7</b>
				CPDLC	



VGSi and RNAV glidepath not coincident (VGSi Angle 3.00/TCH 76).		2000	RATBE	tr 327°	GRIME
ELMAC					
GP 3.00° TCH 59		3400	348°	1400	
		AMEME	1400	CANLO 1.7 NM to RW35L	
				*0.9 NM to RW35L	
				RW35L	
		7.3 NM	2.4 NM	0.8 NM	0.9 NM
CATEGORY	A	B	C	D	
LPV DA#	224/24		200 (200-½)		
LNAV/VNAV DA	313/24		289 (300-½)		
LNAV MDA	380/24 356 (400-½)		380/30 356 (400-⅝)		
◼ CIRCLING	440-1 413 (500-1)	480-1 453 (500-1)	480-1½ 453 (500-1½)	580-2 553 (600-2)	



SW-2, 03 DEC 2020 to 31 DEC 2020

SW-2, 03 DEC 2020 to 31 DEC 2020