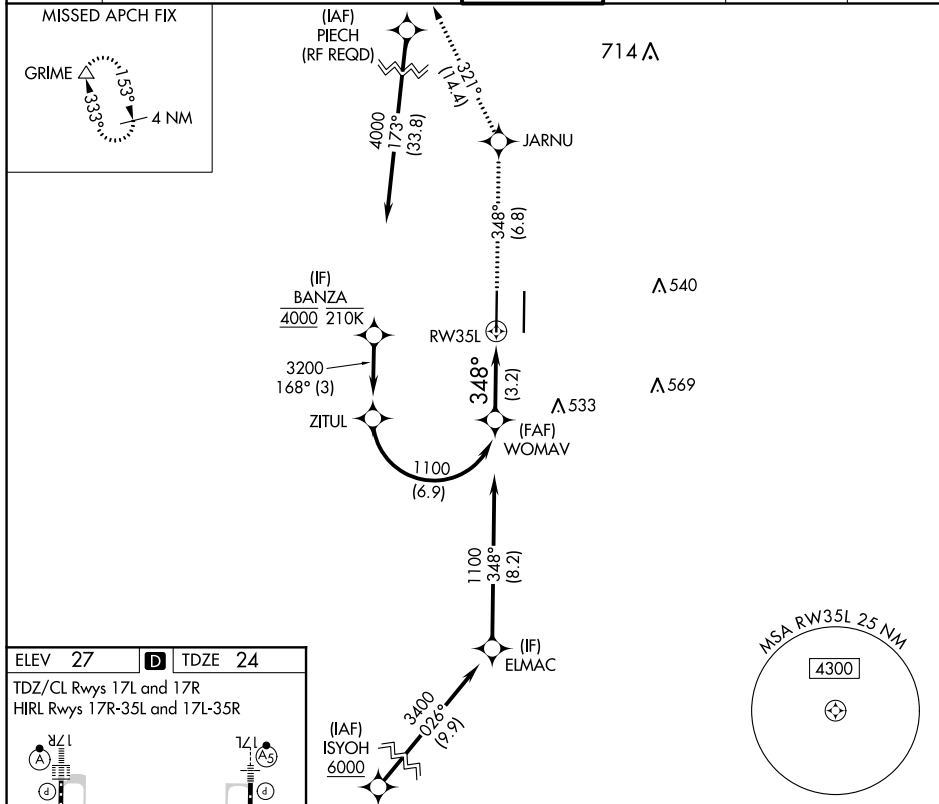


APP CRS 348°	Rwy Idg 8598 TDZE 24 Apt Elev 27
------------------------	---

RNAV (RNP) Z RWY 35L
SACRAMENTO INTL (SMF)

RNP AR APCH.						MALSR		MISSED APPROACH: Climb to 2000 on track 348° to JARNU and track 321° to GRIME and hold.				
<div>▼ For uncompensated Baro-VNAV systems, procedure NA below -4°C or above 54°C. For inop ALS, increase RNP 0.30 all Cats visibility to RVR 5000.</div>						<div>AS<div></div></div>						
D-ATIS 126.75		NORCAL APP CON 125.4 259.1 (W-NE) 125.25 257.9 (SW) 127.4 317.5 (E-SE)				CAPITOL TOWER 125.7 256.7		GND CON 121.7 256.7		CLNC DEL 121.1 256.7		CPDLC



ELEV 27 TDZE 24

TDZ/CL Rwy 17L and 17R

HIRL Rwy 17R-35L and 17L-35R

17L 17R

8598 X 150 8605 X 150

112± 107

TWR 175

35L 35R

348° to RW35L

VGS1 and RNAV glidepath not coincident (VGS1 Angle 3.00/TCH 76).

WOMAV

1100

1100

GP 3.00°
TCH 59°

348°

3.2 NM

2000
tr 348°

JARNU

tr 321°

GRIME

RW35L

CATEGORY

RNP 0.30 DA

A B C D

327/26 303 (300-1/2)

AUTHORIZATION REQUIRED