


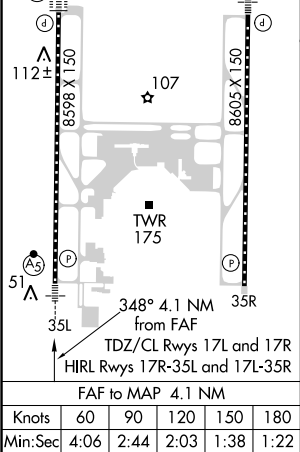
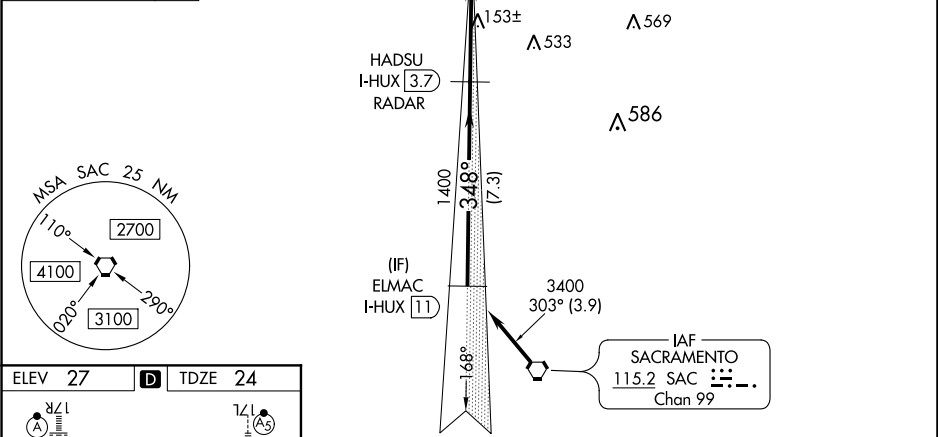
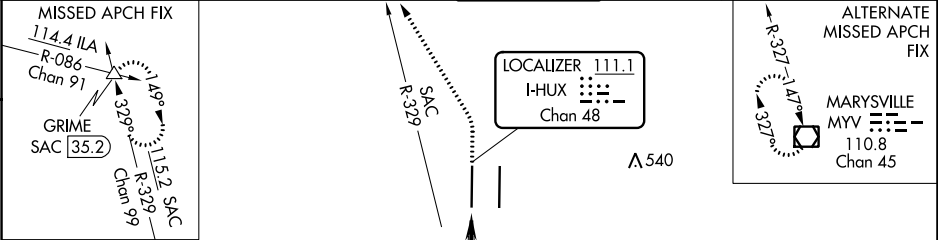
LOC/DME I-HUX 111.1 Chan 48	APP CRS 348°	Rwy Idg 8598 TDZE 24 Apt Elev 27
---	------------------------	---

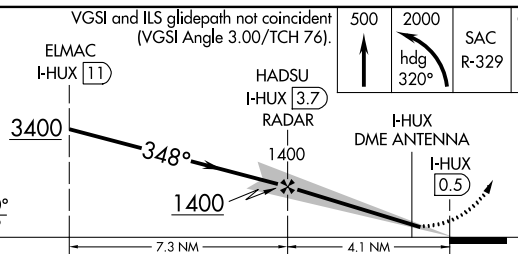
ILS or LOC RWY 35L

SACRAMENTO INTL (SMF)

DME required for procedure entry. RADAR or DME required for LOC only.	MALSR 	MISSED APPROACH: Climb to 500 then climbing left turn to 2000 on heading 320° and SAC VORTAC R-329 to GRIME INT/SAC 35.2 DME and hold.
Circling NA east of Rwy 17R-35L. Autopilot coupled approach NA below 312 MSL. For inop ALS, increase S-LOC 35L Cats C and D visibility to RVR 6000. *RVR 1800 authorized with the use of FD or AP or HUD to DA.		

D-ATIS 126.75	NORCAL APP CON 125.4 259.1 (W-NE) 125.25 257.9 (SW) 127.4 317.5 (E-SE)	CAPITOL TOWER 125.7 256.7	GND CON 121.7 256.7	CLNC DEL 121.1 256.7	CPDLC
-------------------------	---	-------------------------------------	-------------------------------	--------------------------------	-------



Procedure NA for arrivals on SAC VORTAC airway radials 257 CW 329.				
VGSI and ILS glidepath not coincident (VGSI Angle 3.00/TCH 76).				
				
GS 3.00° TCH 59				
CATEGORY	A	B	C	D
S-ILS 35L*	224/24 200 (200-½)			
S-LOC 35L	420/24	396 (400-½)	420/35 396 (400-¾)	420/40 396 (400-¾)
CIRCLING	440-1 413 (500-1)	480-1 453 (500-1)	480-1½ 453 (500-1½)	580-2 553 (600-2)