

|   |                        |   |
|---|------------------------|---|
| LOC/DME I-MDK<br><b><u>111.75</u></b><br>Chan <b>54</b> (Y) | APP CRS<br><b>168°</b> | Rwy Idg <b>8605</b><br>TDZE <b>27</b><br>Apt Elev <b>27</b> |
|---|------------------------|---|

ILS RWY 17L (SA CAT II)  
SACRAMENTO INTL(SMF)

RNAV 1-GPS or RADAR required for procedure entry.  
From TENCO: RNAV 1-GPS required. DME or RADAR required.

**T** Simultaneous approach authorized. Reduced lighting: Requires specific  
**A** OPSPEC, MSPEC, or LOA approval and use of autoland or HUD to touchdown.

MALSR



**MISSED APPROACH:** Climb to 500 then climbing left turn to 3000 direct SAC VORTAC and hold.

|                  |                |              |        |            |               |         |       |          |       |       |
|------------------|----------------|--------------|--------|------------|---------------|---------|-------|----------|-------|-------|
| D-ATIS<br>126.75 | NORCAL APP CON |              |        |            | CAPITOL TOWER | GND CON |       | CLNC DEL |       | CPDLC |
|                  | 125.4          | 259.1 (W-NE) | 125.25 | 257.9 (SW) | 125.7 256.7   | 121.7   | 256.7 | 121.1    | 256.7 |       |

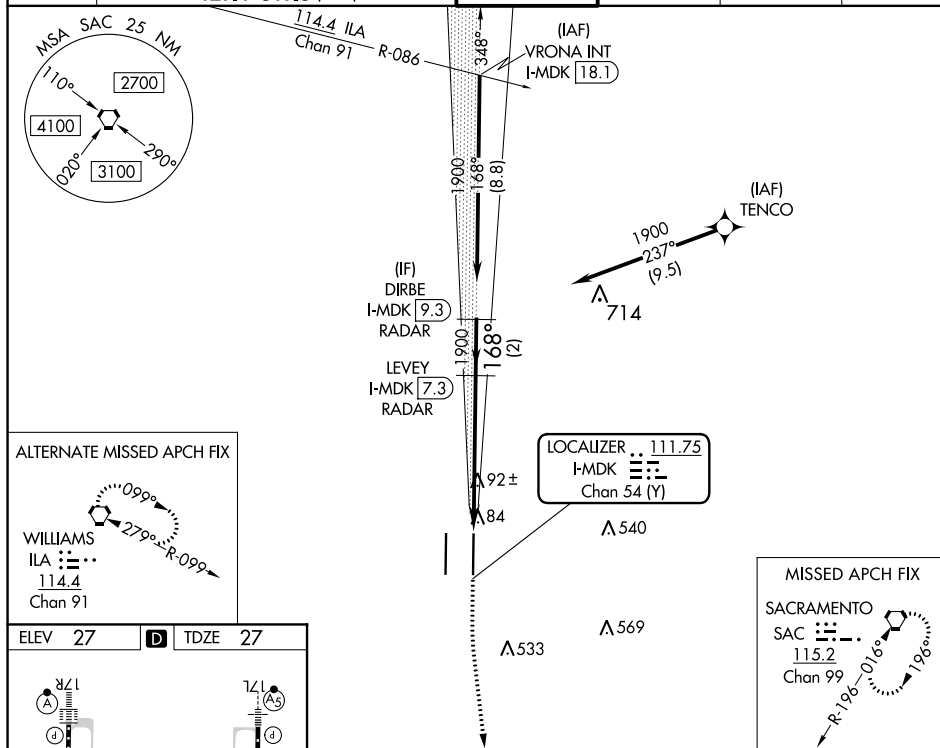

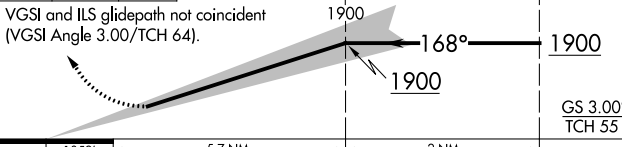


Diagram illustrating the TDZ/CL Rwy systems and HIRL Rwy systems for Runways 17L, 17R, 35L, and 35R. The diagram shows the layout of the runways, including the TDZ (Touchdown Zone) and CL (Center Line) markings, and the HIRL (High Intensity Runway Light) system. Key dimensions and elevations are provided: 17R (ELEV 27), 17L (ELEV 27), 35L (ELEV 51), and 35R (ELEV 35). The diagram also shows the TWR (Tower) at 175 and the HIRL system for Runways 17L and 35L.

|   |           |  |   |   |                             |   |
|---|-----------|--|---|---|-----------------------------|---|
| 500<br>↑  | 3000<br>↘ | SAC<br> | LEVEY<br>I-MDK 7.3<br>RADAR   |   | DIRBE<br>I-MDK 9.3<br>RADAR |   |
| VGS1 and ILS glidepath not coincident<br>(VGS1 Angle 3.00/TCH 64).      |           |  |  |   |                             |   |
| CATEGORY<br>S-ILS 17L   |           |  | A   | B | C                           | D |
| RA 108/12 100 DA 127  |           |  |   |   |                             |   |
| SA CATEGORY II ILS-SPECIAL AIRCREW<br>& AIRCRAFT CERTIFICATION REQUIRED |           |  |   |   |                             |   |