

TACAN RWY 32L

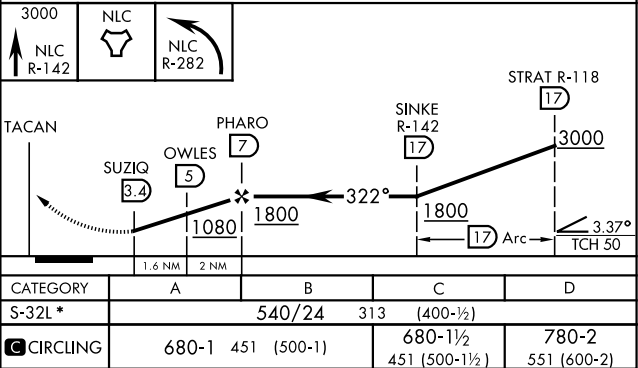
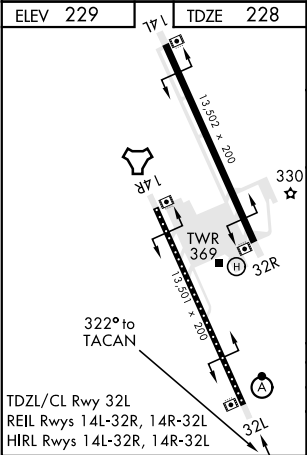
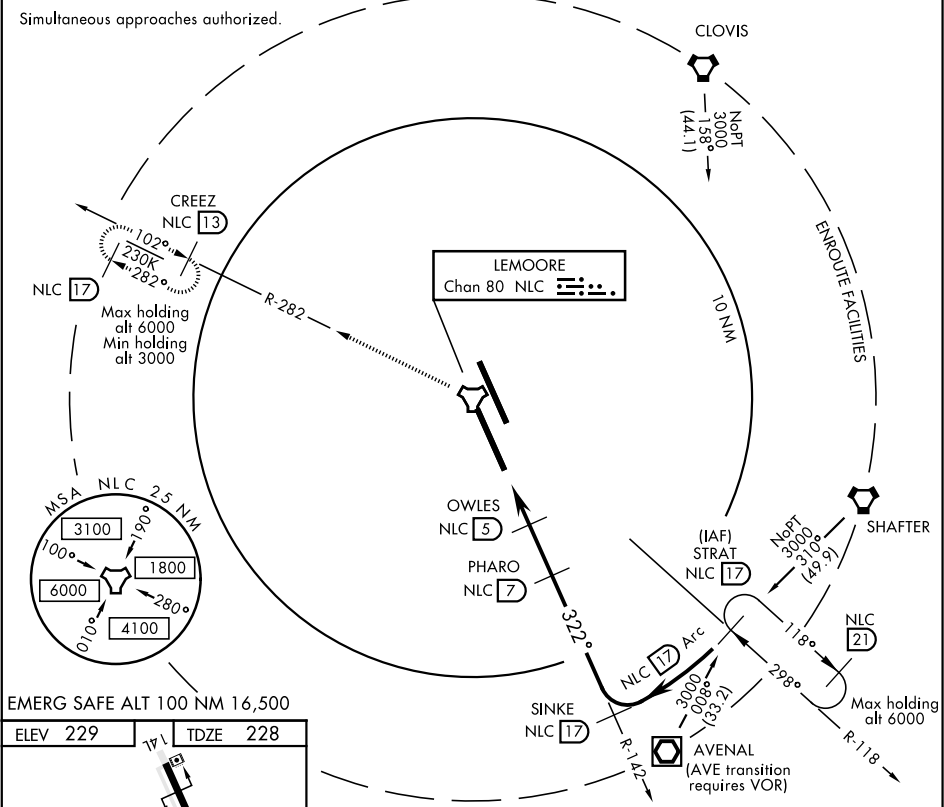
TACAN NLC Chan <b>80</b>	APCH CRS <b>322°</b>	Rwy ldg <b>13,501</b> TDZE <b>228</b> Arprt Elev <b>229</b>
--------------------------	----------------------	---

AL-5067 [USN]

LEMOORE NAS (REEVES FIELD) (KNLC)

<b>V</b> *When ALS inop, increase CAT ABCD RVR to 55 and vis to 1 mile.	ALSF-2 	MISSED APPROACH: Climb to 3000 via R-142 to NLC TACAN, then via R-282 to CREEZ and hold.
---	------------	--

ATIS ★ <b>121.575 327.15</b>	LEMOORE APP CON <b>N124.1 S118.15 269.025</b>	LEMOORE TOWER ★ <b>128.3 340.2</b>	GND CON <b>121.65 305.2</b>	CLNC DEL <b>124.1 371.9</b>	ASR/PAR
---------------------------------	--	---------------------------------------	--------------------------------	--------------------------------	---------



TACAN RWY 32L

SW-2, 03 DEC 2020 to 31 DEC 2020

SW-2, 03 DEC 2020 to 31 DEC 2020