

TACAN RWY 14R

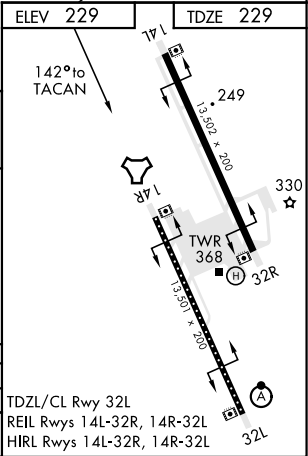
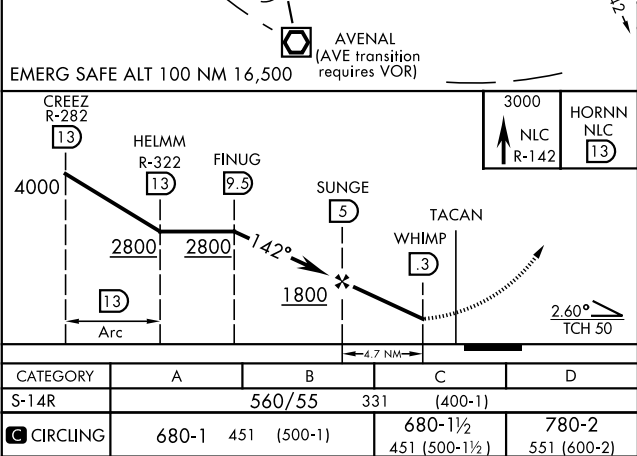
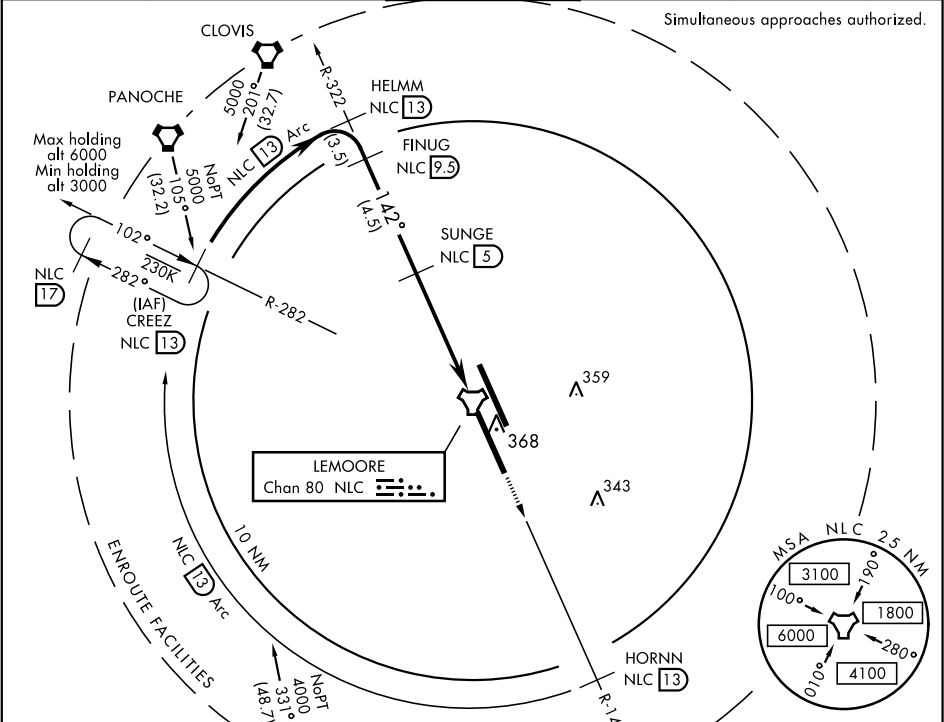
TACAN NLC	APCH CRS	Rwy ldg
Chan 80	142°	13,501
		TDZE 229
		Arprt Elev 229

AL-5067 [USN]

LEMOORE NAS (REEVES FIELD) (KNLC)

	MISSED APPROACH: Climb to 3000 via R-142 to HORN, then arc SW of NLC TACAN via the 13 DME Arc to CREEZ and hold.				
--	--	--	--	--	--

ATIS ★	LEMOORE APP CON	LEMOORE TOWER ★	GND CON	CLNC DEL	ASR/PAR
121.575 327.15	N124.1 S118.15 269.025	128.3 360.2	121.65 305.2	124.1 371.9	



TACAN RWY 14R

SW-2, 03 DEC 2020 to 31 DEC 2020

SW-2, 03 DEC 2020 to 31 DEC 2020