

LEMOORE, CALIFORNIA

RNAV (GPS) RWY 32L

WAAS Chan 50085 W32A	APCH CRS 322°	Rwy Idg 13,501 TDZE 228 Arpt Elev 229
--	-------------------------	--

AL-5067 [USN]

LEMOORE NAS (REEVES FIELD) (KNLC)

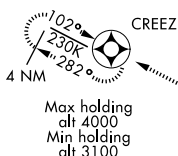
* When ALS inop, increase CAT ABCD RVR to 40 and vis to $\frac{3}{4}$ mile.
** When ALS inop, increase RVR to 55 and vis to 1 mile.
DME/DME RNP-0.3 NA

ALSF-2

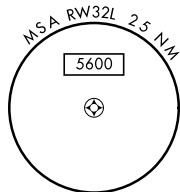
MISSED APPROACH: Climb to 1000, then climbing left turn to 3100 direct CREEZ and hold.

ATIS ★	LEMOORE APP CON	LEMOORE TOWER ★	GND CON	CLNC DEL	ASR/PAR
121.575 327.15	N124.1 S118.15 269.025	128.3 340.2	121.65 305.2	124.1 371.9	

Simultaneous approaches authorized.
LNAV procedure NA during Simultaneous operations.
Use of FD or AP providing RNAV track guidance required
during simultaneous operations.

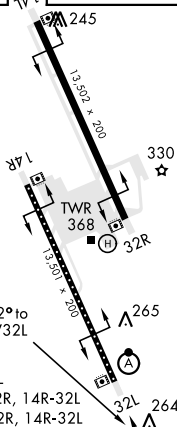


For uncompensated BARO-VNAV systems, LNAV/VNAV procedure NA below -15°C (5°F) and above 54°C (130°F).

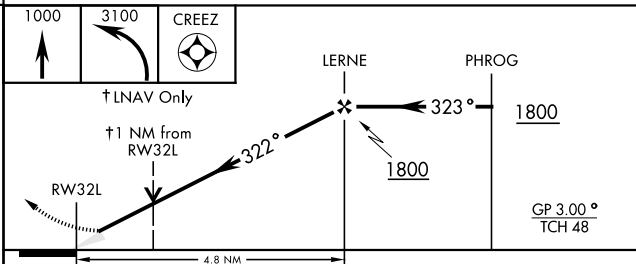



EMER SAFE ALT 100 NM 16,500

ELEV 229	271	TDZE 228
----------	-----	----------



TDZL/CL Rwy 32L
REIL Rwys 14L-32R, 14R-32L
HIRL Rwys 14L-32R, 14R-32L



CATEGORY	A	B	C	D
LPV DA *	428/18		200 (200-½)	
LNNAV/ VNAV DA *	478/18	250 (300-½)		479/18 251 (300-½)
LNNAV MDA**	600/24	372 (400-½)	600/35	372 (400-¾)
 CIRCLING	680-1	451 (500-1)	680-1½ 451 (500-1½)	780-2 551 (600-2)

LEMOORE, CALIFORNIA

36°20'N-119°57'W

LEMOORE NAS (REEVES FIELD) (KNLC)

Amdt 4 24MAY18

RNAV (GPS) RWY 32L

SW-2, 03 DEC 2020 to 31 DEC 2020

SW-2, 03 DEC 2020 to 31 DEC 2020