

LEMOORE-NINE DEPARTURE (NLC9•NLC)

LEMOORE NAS (REEVES FIELD) (KNLC)  
SHL-5067 [USN] LEMOORE, CALIFORNIA

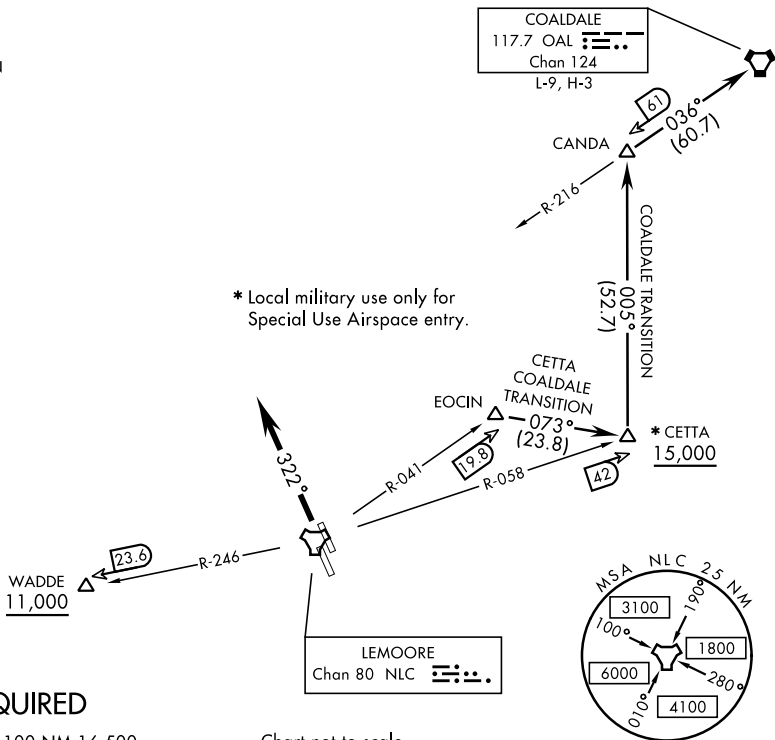
ATIS ★ 121.575 327.15  
CLNC DEL  
124.1 371.9  
GND CON  
121.65 305.2  
LEMOORE TOWER ★  
128.3 340.2  
(Rwy 14L, 32L)  
128.3 360.2  
(Rwy 14R, 32R)  
LEMOORE DEP CON  
124.1 318.8 (N)  
118.15 318.8 (S)

| Rwy     | Knots    | 60  | 120 | 180  | 240  | 300  | 360  |
|---------|----------|-----|-----|------|------|------|------|
| †32L/R  | V/V(fpm) | 318 | 636 | 954  | 1272 | 1590 | 1908 |
| ††32L/R | V/V(fpm) | 397 | 794 | 1191 | 1588 | 1985 | 2382 |

† ATC climb rate, CETTA transition to 15,000  
†† ATC climb rate, WADDE transition to 11,000

\* Local military use only for  
Special Use Airspace entry.

▲  
5405



RADAR REQUIRED

EMERG SAFE ALT 100 NM 16,500

Chart not to scale

DEPARTURE ROUTE DESCRIPTION

**TAKE-OFF RUNWAYS 32L/32R:** Climb to 2000 via heading 322° then radar vectors to join assigned transition or route.

**CETTA TRANSITION (NLC9•CETTA):** From over EOCIN direct CETTA thence as filed. Cross CETTA at or above 15,000.

**COALDALE TRANSITION (NLC9•OAL):** From over EOCIN direct CETTA, direct CANDA, direct COALDALE VORTAC. Cross CETTA at or above 15,000.

**WADDE TRANSITION (NLC9•WADDE):** From over WADDE thence as filed. Cross WADDE at or above 11,000.

**LOST COMMUNICATIONS:** If no transmissions are received within 8 DME of NLC TACAN, fly departure heading to intercept NLC 10 DME arc, arc to respective departure radial then via departure radial to assigned departure fix. Then via assigned route. Once established on departure radial climb to filed altitude.

LEMOORE-NINE DEPARTURE (NLC9•NLC)

LEMOORE, CALIFORNIA  
LEMOORE NAS (REEVES FIELD) (KNLC)

Amdt 1 24MAY18