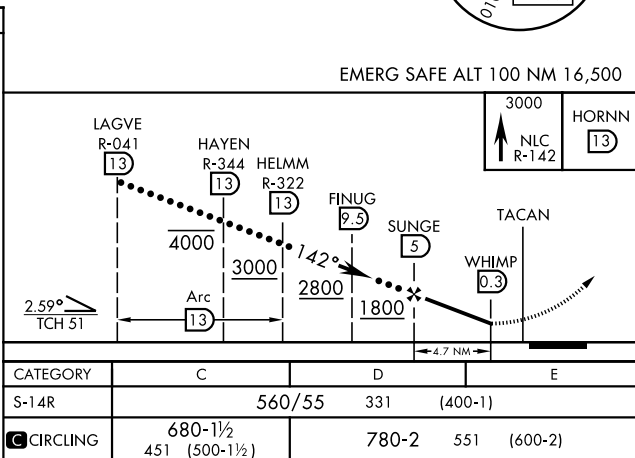
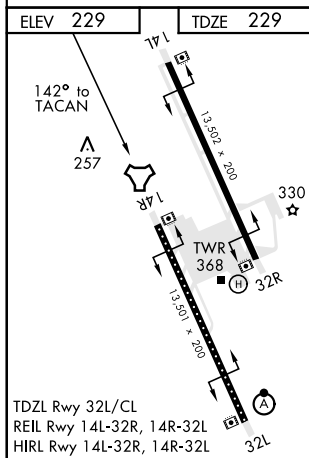
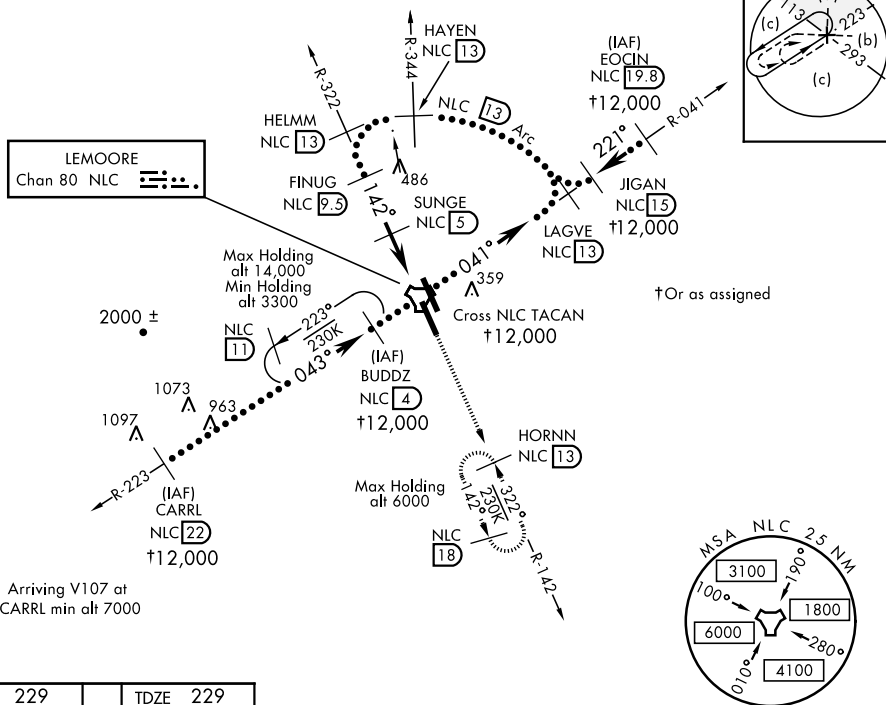


## HI-TACAN RWY 14R

TACAN NLC Chan <b>80</b>	APCH CRS <b>142°</b>	Rwy ldg <b>13,501</b> TDZE <b>229</b> Arprt Elev <b>229</b>	JAL-5067 [USN]	LEMOORE NAS (REEVES FIELD) (KNLC)
-----------------------------	-------------------------	---	----------------	-----------------------------------

<b>V</b>	MISSED APPROACH: Climb to 3000 via R-142 to HORNN and hold.							
ATIS ★ 121.575 327.15		LEMOORE APP CON N 124.1 S 118.15 269.025		LEMOORE TOWER ★ 128.3 360.2		GND CON 121.65 305.2	CLNC DEL 124.1 371.9	ASR/ PAR

Simultaneous approaches authorized.



## HI-TACAN RWY 14R