

RNAV (GPS) RWY 33

APCH CRS	Rwy Idg	12,001
325°	THRE	105
	Arpt Elev	113

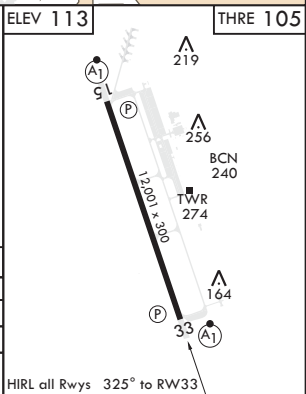
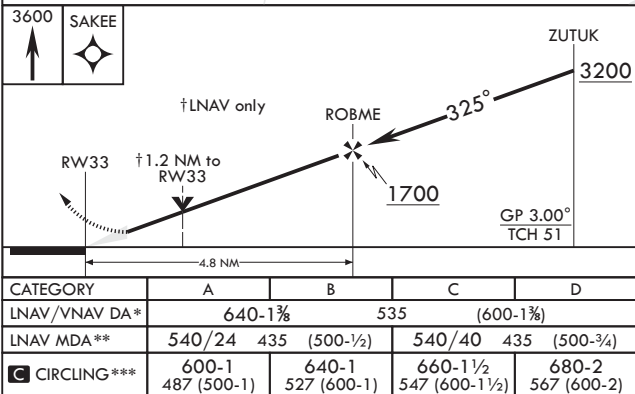
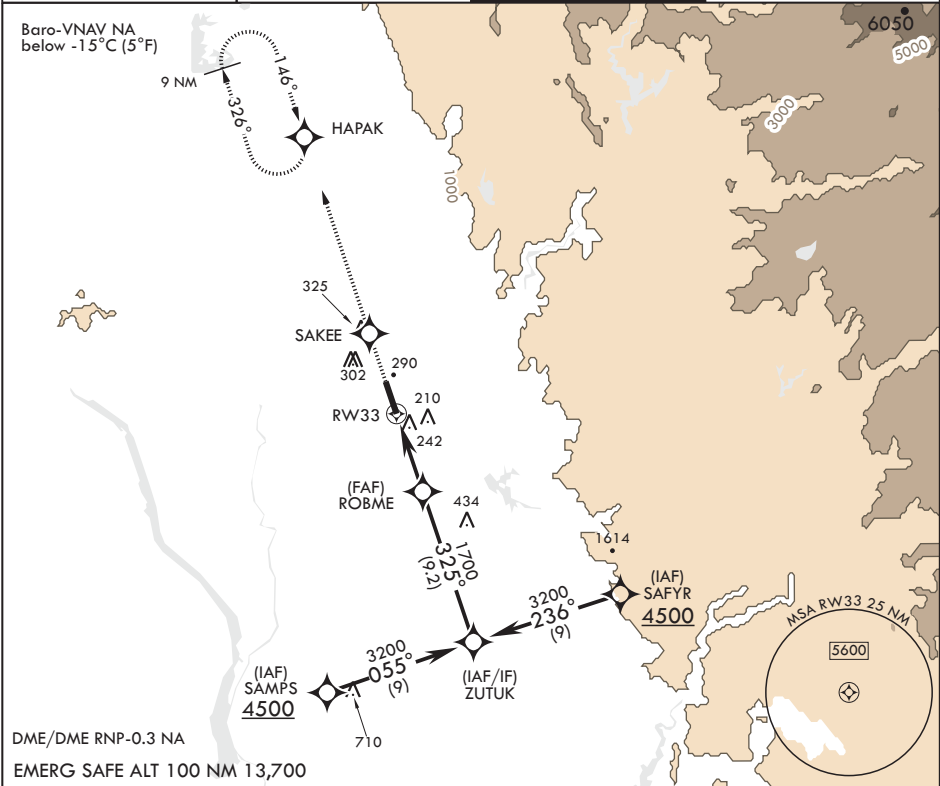
AL-771 (USAF)

BEALE AFB (KBAB)

V * When ALS inop, increase vis to 1 7/8 miles.
** When ALS inop, increase CAT AB RVR to 55 and vis to 1 mile, CAT CD vis to 1 1/4 miles.
*** Circling not authorized E of Rwy 15-33.

ALSF-1	MISSED APPROACH: Climb direct SAKEE, then track 326° to HAPAK and hold, maintain 3600.
--------	--

ATIS★ 124.55 273.5	NORCAL APP CON 125.4 259.1	TOWER★ 119.4 284.75	GND CON 121.6 257.75
-----------------------	-------------------------------	------------------------	-------------------------



RNAV (GPS) RWY 33

SW-2, 03 DEC 2020 to 31 DEC 2020

SW-2, 03 DEC 2020 to 31 DEC 2020