

MARYSVILLE, CALIFORNIA

RNAV (GPS) RWY 15

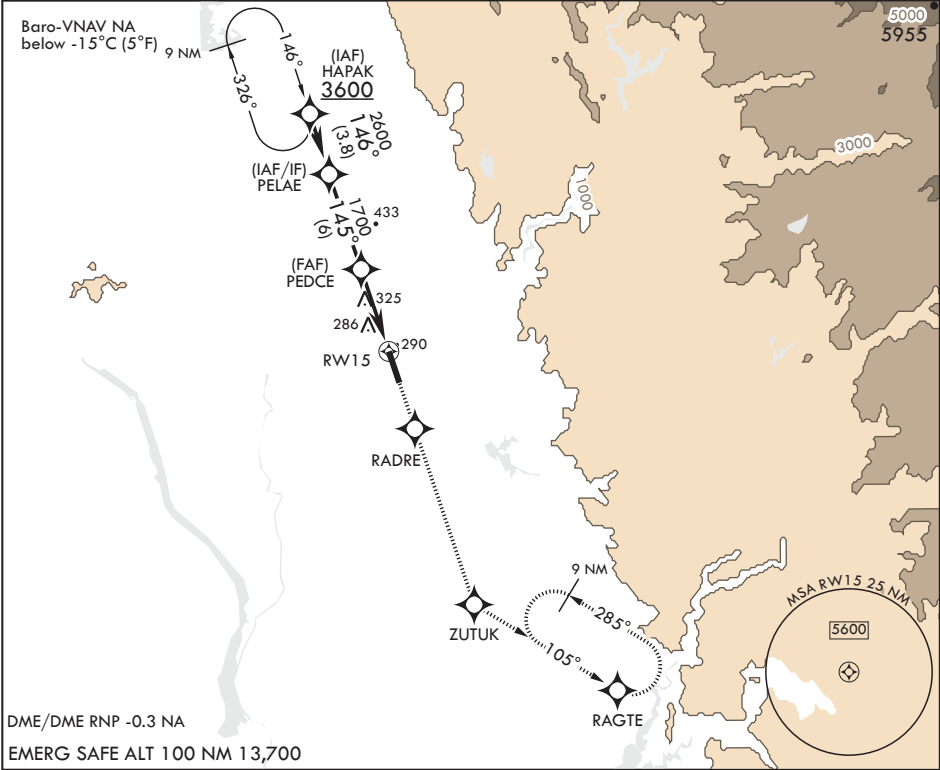
APCH CRS	Rwy Idg	12,001
145°	THRE	113
	Arpt Elev	113

AL-771 (USAF)

BEALE AFB (KBAB)

<p>⚠ * When ALS inop, increase vis to 2 1/2 miles. ** When ALS inop, increase CAT AB RVR to 55 and vis to 1 mile, CAT CDE vis to 1 3/8 miles. *** Circling not authorized E of Rwy 15-33.</p>	<p>ALSF-1</p> <p>A1</p>	<p>MISSED APPROACH: Climb direct RADRE, then track 145° to ZUTUK, then turn left and track 105° to RAGTE and hold, maintain 3600.</p>
--	--------------------------------	--

<p>ATIS*</p> <p>124.55 273.5</p>	<p>NORCAL APP CON</p> <p>125.4 259.1</p>	<p>TOWER*</p> <p>119.4 284.75</p>	<p>GND CON</p> <p>121.6 257.75</p>
--	--	---	--



PELAE	VGSi and descent angles not coincident.		3600	RADRE	tr 145°	ZUTUK	ELEV 113	THRE 113
2600	145°		1700	PEDCE		1.6 NM to RW15	219	
GP 2.75°	TCH 47		5.2 NM		RW15		256	
CATEGORY		A	B	C	D	E	BCN 240	
LNAV/VNAV DA*		680-1%		567		(600-1%)		TWR 274
LNAV MDA**		620/24 507 (600-1/2)		620/55		507 (600-1)		33
CIRCLING***		620-1 507 (600-1)		640-1 527 (600-1)		660-1 547 (600-1 1/2)		680-2 567 (600-2)
								840-2 727 (800-2 1/2)

HIRL all Rws

MARYSVILLE, CALIFORNIA

39°08'N - 121°26'W

BEALE AFB (KBAB)

Amdt 1 20JUL17

RNAV (GPS) RWY 15

SW-2, 03 DEC 2020 to 31 DEC 2020

SW-2, 03 DEC 2020 to 31 DEC 2020