

MARYSVILLE, CALIFORNIA

HI-TACAN Z RWY 33

TACAN BAB Chan 23	APCH CRS 317°	Rwy Idg 12,001 TDZE 105 Arpt Elev 113
----------------------	------------------	---

JAL-771 (USAF)

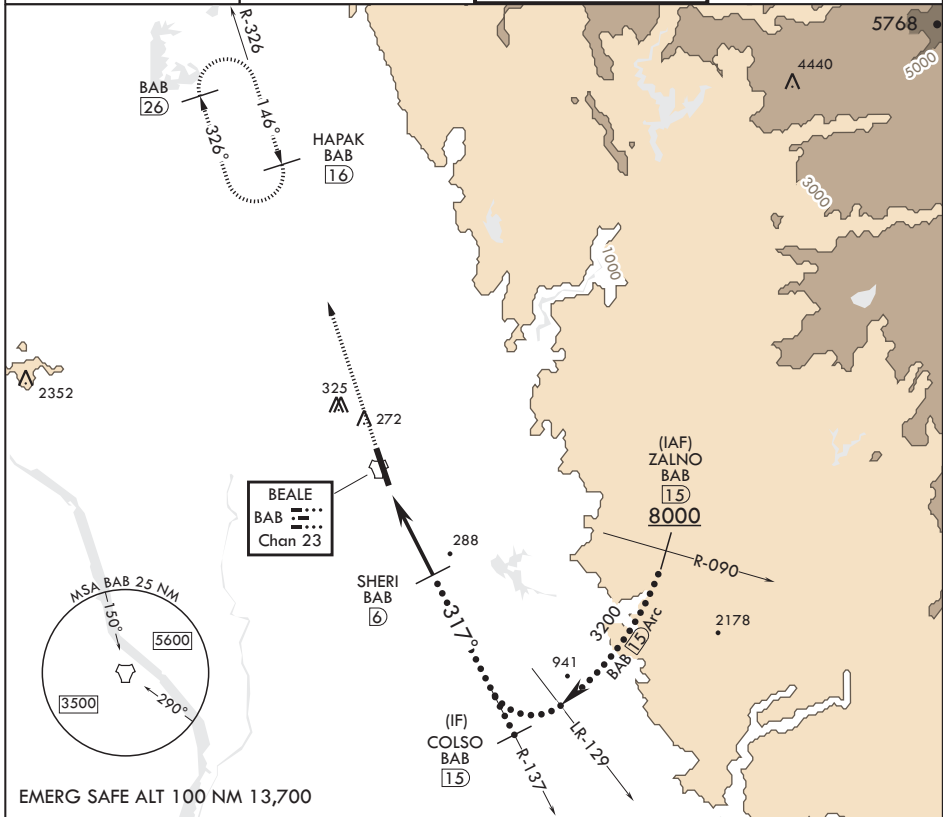
BEALE AFB (KBAB)

T * When ALS inop, increase CAT CDE vis to 1 1/4 miles.
 ** Circling not authorized E of Rwy 15-33

ALSF-1

MISSED APPROACH: Climb to 3600, intercept BAB TACAN R-326 to HAPAK and hold.

<p>ATIS★</p> <p>124.55 273.5</p>	<p>NORCAL APP CON</p> <p>125.4 259.1</p>	<p>TOWER★</p> <p>119.4 284.75</p>	<p>GND CON</p> <p>121.6 257.75</p>
----------------------------------	--	-----------------------------------	------------------------------------



CATEGORY	C	D	E
S-33*	540/40	435	(500-3/4)

CIRCLING**

600-1½ 487 (500-1½)	680-2 567 (600-2)	840-2½ 727 (800-2½)
------------------------	-------------------	------------------------

HIRL all Rwy's

MARYSVILLE, CALIFORNIA

39°08'N - 121°26'W

BEALE AFB (KBAB)

Amdt 5 20JUL17

HI-TACAN Z RWY 33

SW-2, 03 DEC 2020 to 31 DEC 2020

SW-2, 03 DEC 2020 to 31 DEC 2020