

MARYSVILLE, CALIFORNIA

HI-TACAN Z RWY 15

TACAN BAB Chan <b>23</b>	APCH CRS <b>153°</b>	Rwy ldg <b>12,001</b> TDZE <b>113</b> Arpt Elev <b>113</b>
-----------------------------	-------------------------	--

JAL-771 (USAF)

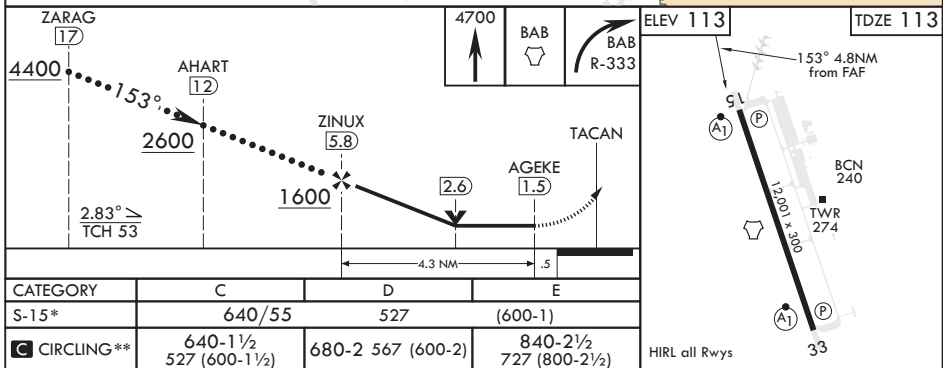
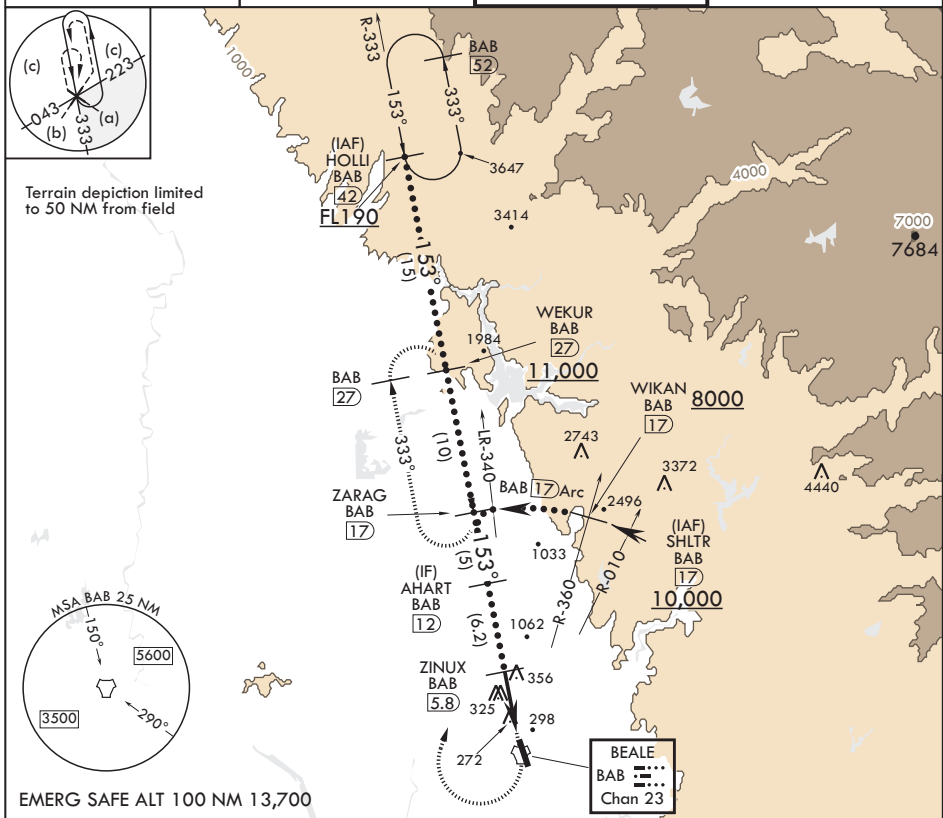
BEALE AFB (KBAB)

**T** \* When ALS inop, increase CAT CDE vis to 1 1/2 miles.  
\*\* Circling not authorized E of Rwy 15-33.

ALSF-1

**MISSED APPROACH:** Climb to 4700 direct to BAB TACAN. Turn right to intercept BAB R-333 to ZARAG and hold, continue to climb in hold to 4700.

<p>ATIS★</p> <p>124.55 273.5</p>	<p>NORCAL APP CON</p> <p>125.4 259.1</p>	<p>TOWER★</p> <p>119.4 284.75</p>	<p>GND CON</p> <p>121.6 257.75</p>
----------------------------------	--	-----------------------------------	------------------------------------



MARYSVILLE, CALIFORNIA

39°08'N - 121°26'W

BEALE AFB (KBAB)

Amdt 5 20JUL17

# HI-TACAN Z RWY 15

SW-2, 03 DEC 2020 to 31 DEC 2020

SW-2, 03 DEC 2020 to 31 DEC 2020