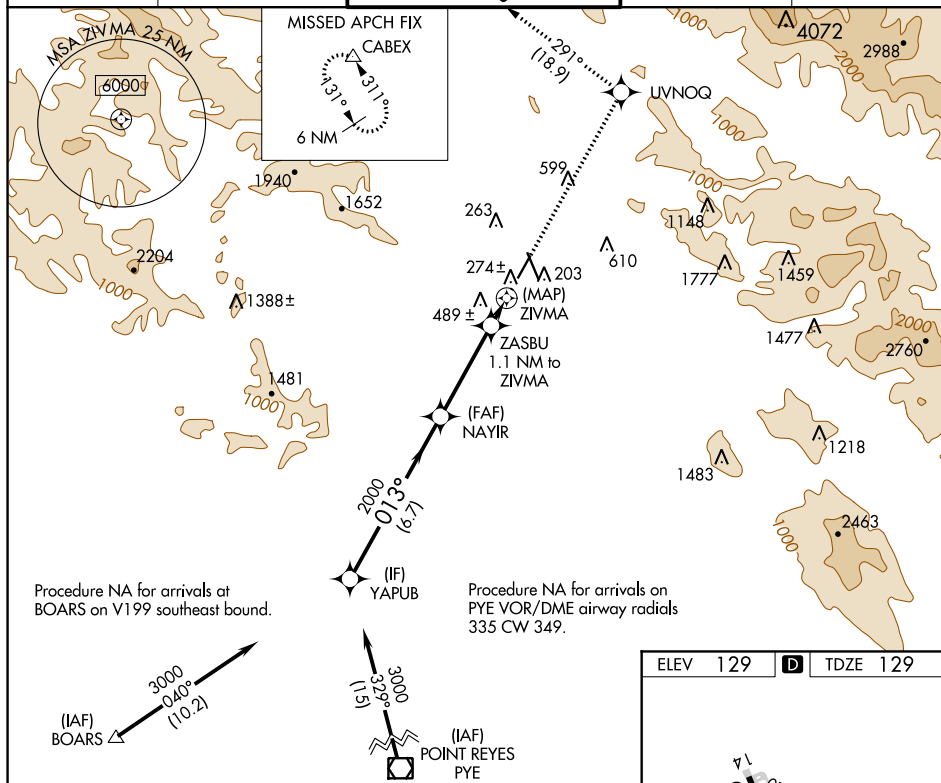


# RNAV (GPS) RWY 2

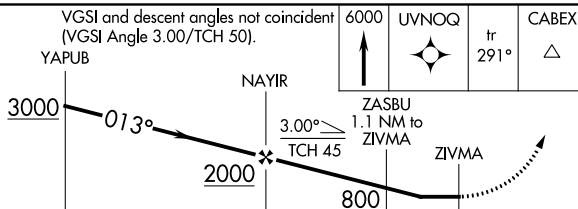
## CHARLES M SCHULZ-SONOMA COUNTY (STS)


**T**  
**A** Rwy 2 helicopter visibility reduction below  $\frac{3}{4}$  SM NA.

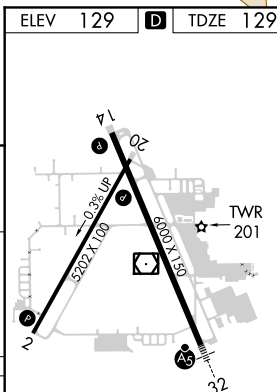
**MISSED APPROACH:** Climb to 6000 direct UVNOQ and on track 291° to CABEX and hold, continue climb-in-hold to 6000.

UNICOM  
122.95

VGSI and descent angles not coincident  
(VGSI Angle 3.00/TCH 50).



	6.7 NM		3.7 NM		1.1 NM		0.9 NM	
CATEGORY	A		B		C		D	
LP MDA	500-1		371 (400-1)					
LNAV MDA	660-1 531 (600-1)		660-1½ 531 (600-1½)					
 CIRCLING	660-1 531 (600-1)		680-1 551 (600-1)		1080-3 951 (1000-3)		1420-3 1291 (1300-3)	



MIRL Rwy 2-20 **L**  
HIRL Rwy 14-32 **L**

CHARLES M SCHULZ-SONOMA COUNTY (STS)  
49°W RNAV (GPS) RWY 2