

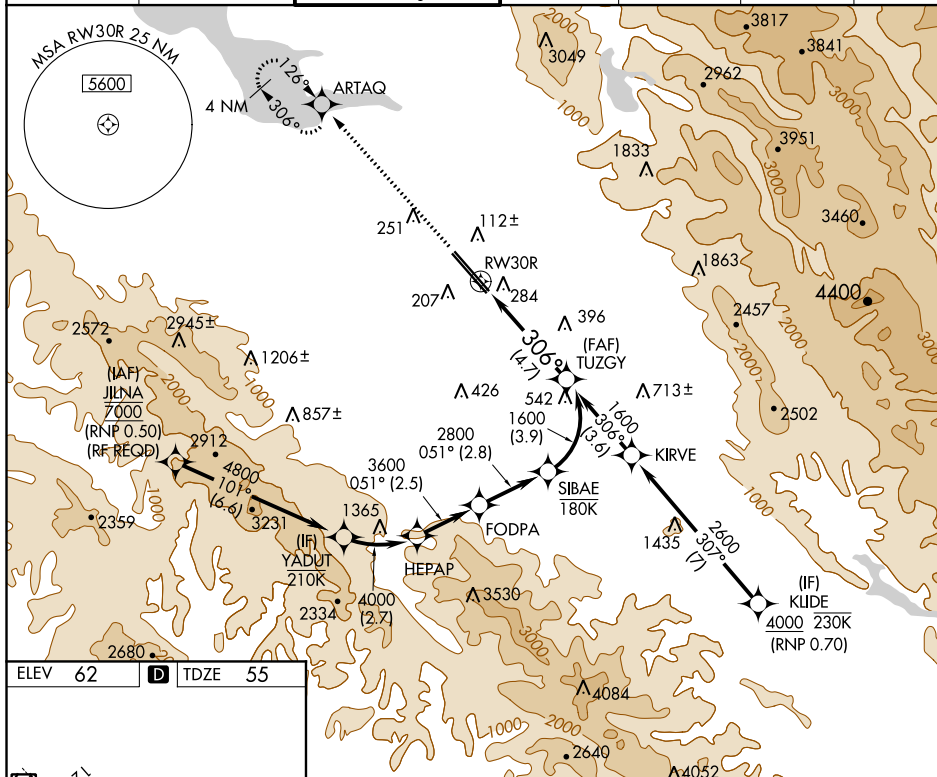
APP CRS 306°	Rwy Idg	7597
	TDZE	55
	Apt Elev	62

RNAV (RNP) Z RWY 30R
NORMAN Y MINETA SAN JOSE INTL (SJC)

T For uncompensated Baro-VNAV systems, procedure NA below -1°C (31°F) or above 54°C (130°F). GPS required.

MISSED APPROACH: Climb to 600 then climb to 2300 direct ARTAQ and hold

D-ATIS 126.95	NORCAL APP CON 120.1 290.25	SAN JOSE TOWER ★ 124.0 (CTAF) 0 257.6	GND CON 121.7	CLNC DEL 118.0	CPDLC	UNICOM 122.95
-------------------------	---------------------------------------	---	-------------------------	--------------------------	-------	-------------------------



REIL Rwy 12L
HIRL Rwy 12L-30R and 12R-30L

VGS1 and RNAV glidepath not coincident
(VGS1 Angle 3.00°/TCH 69°).

See planview for multiple IF locations.

RW30R

306°

4.7 NM

GP 3.00°
TCH 55

CATEGORY	A	B	C	D
RNP 0.11 DA		404-1 $\frac{1}{8}$	349 (400-1 $\frac{1}{8}$)	
RNP 0.20 DA		475-1 $\frac{3}{8}$	420 (500-1 $\frac{3}{8}$)	
RNP 0.30 DA		541-1 $\frac{5}{8}$	486 (500-1 $\frac{5}{8}$)	

AUTHORIZATION REQUIRED