

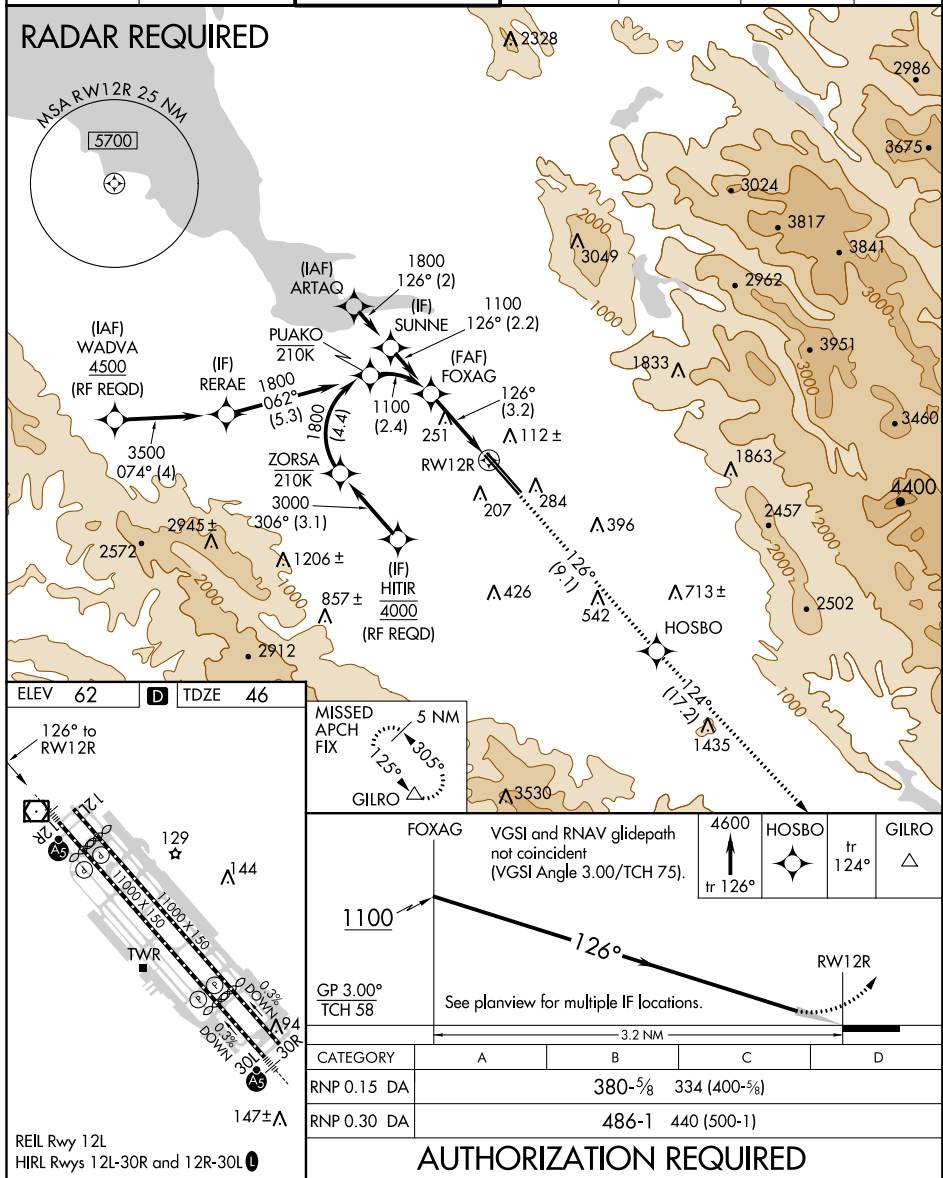
APP CRS <b>126°</b>	Rwy Idg TDZE Apt Elev	<b>8587</b> <b>46</b> <b>62</b>
------------------------	-----------------------------	---------------------------------------

RNAV (RNP) Z RWY 12R  
NORMAN Y MINETA SAN JOSE INTL (SJC)

<p>For uncompensated Baro-VNAV systems, procedure NA below 0°C (32°F) or above 54°C (130°F). GPS required.</p>	<p><b>MALSR</b></p>	<p><b>MISSED APPROACH:</b> Climb to 4600 on track 126° to HOSBO and on track 124° to GILRO and hold</p>
--	---	---

D-ATIS <b>126.95</b>	NORCAL APP CON <b>120.1 290.25</b>	SAN JOSE TOWER★ <b>124.0 (CTAF) 0 257.6</b>	GND CON <b>121.7</b>	CLNC DEL <b>118.0</b>	CPDLC	UNICOM <b>122.95</b>
-------------------------	---------------------------------------	--	-------------------------	--------------------------	-------	-------------------------

## RADAR REQUIRED



FOXAG

VGSI and RNAV glidepath not coincident (VGSI Angle 3.00/TCH 75).

4600  
tr 126°

HOSBO  
tr 124°

GILRO  
△

1100

126°

GP 3.00°  
TCH 58

See planview for multiple IF locations.

3.2 NM

RW12R

CATEGORY	A	B	C	D
RNP 0.15 DA		380-5/8	334 (400-5/8)	
RNP 0.30 DA		486-1	440 (500-1)	

**AUTHORIZATION REQUIRED**