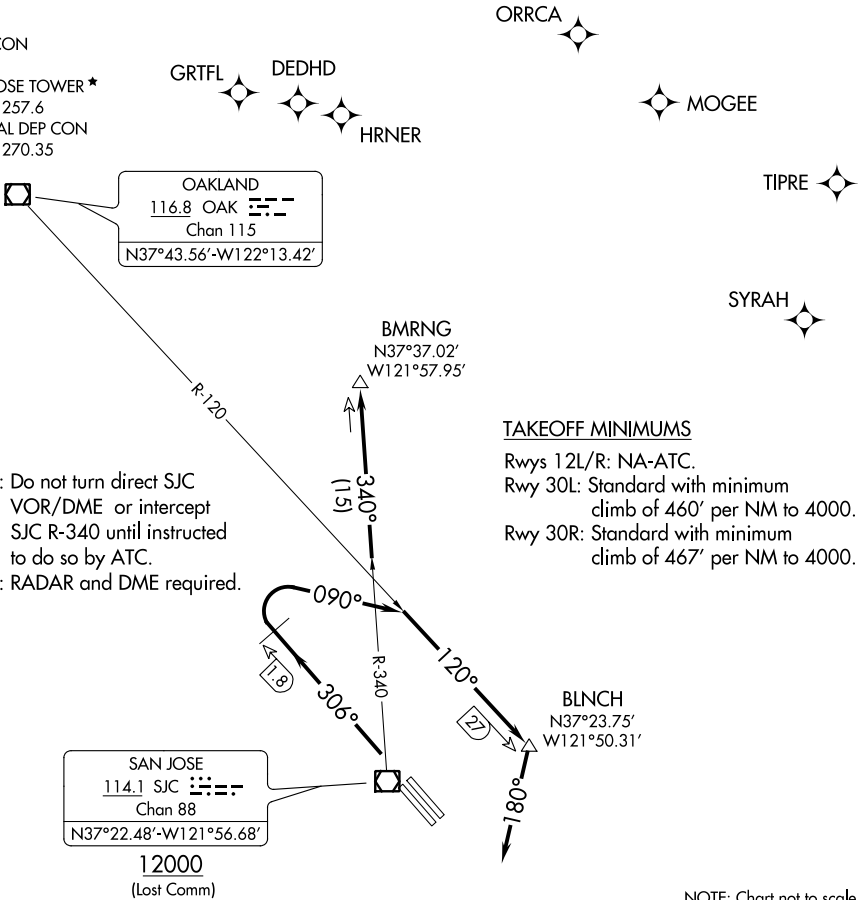


(LOUPE5.BMRNG) 19143  
LOUPE FIVE DEPARTURE

AL-693 (FAA)  
NORMAN Y MINETA SAN JOSE INTL (SJC)  
SAN JOSE, CALIFORNIA

D-ATIS  
126.95  
CLNC DEL  
118.0  
CPDLC  
GND CON  
121.7  
SAN JOSE TOWER ★  
124.0 257.6  
NORCAL DEP CON  
121.3 270.35

TOP ALTITUDE:  
5000



NOTE: Do not turn direct SJC VOR/DME or intercept SJC R-340 until instructed to do so by ATC.  
NOTE: RADAR and DME required.

TAKEOFF MINIMUMS  
Rwys 12L/R: NA-ATC.  
Rwy 30L: Standard with minimum climb of 460' per NM to 4000.  
Rwy 30R: Standard with minimum climb of 467' per NM to 4000.

DEPARTURE ROUTE DESCRIPTION

TAKEOFF RUNWAYS 30L/R: Climb heading 306°, at SJC VOR/DME 1.8 DME northwest turn right heading 090° to intercept OAK R-120 to BLNCH, then turn right heading 180° for RADAR vectors to SJC VOR/DME, then on SJC R-340 to BMRNG INT. Maintain 5000, expect filed altitude 10 minutes after departure.

LOST COMMUNICATIONS

RUNWAYS 30L/R: If not in contact with departure control upon reaching BLNCH, depart BLNCH heading 180°. When able turn right direct SJC VOR/DME, cross SJC VOR/DME at or above 12000, then on SJC R-340 to BMRNG INT before proceeding on course.