

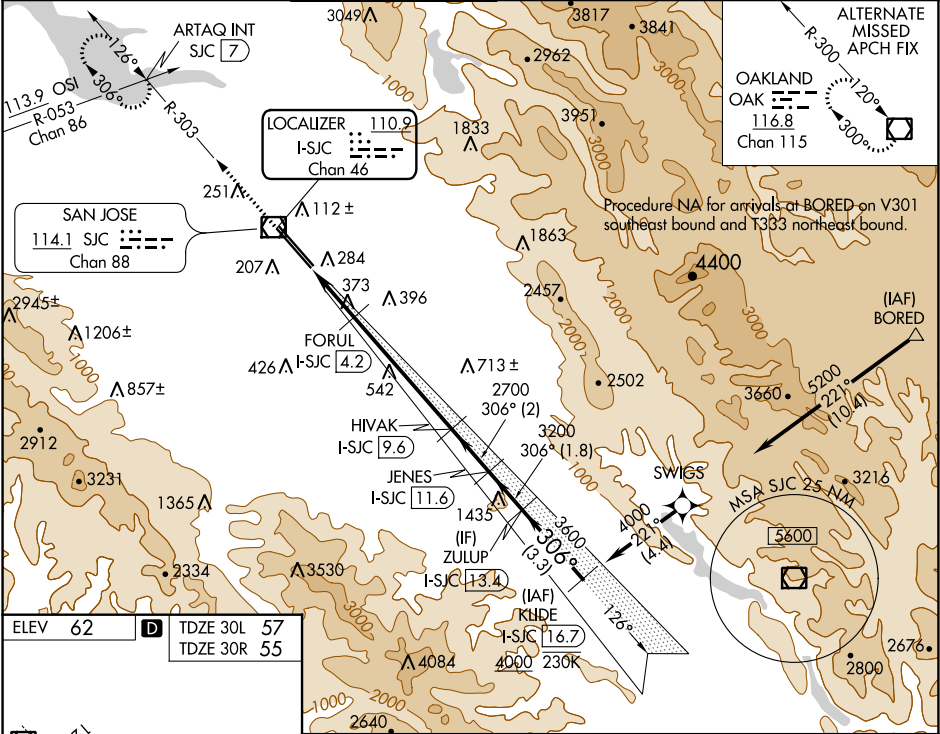
LOC/DME I-SJC	APP CRS	Rwy Idg	30L	30R
<b>110.9</b>	<b>306°</b>	<b>7614</b>	<b>7597</b>	
Chan 46		TDZE	57	55
		Apt Elev	62	62

ILS or LOC RWY 30L

NORMAN Y MINETA SAN JOSE INTL (SJC)

RNAV 1-GPS or RADAR required for procedure entry. DME required. From BORED: RNAV 1-GPS required.		MALSR Rwy 30L	MISSED APPROACH: Climb to 1900 on SJC VOR/DME R-303 to ARTAQ INT/SJC 7 DME and hold.
# RVR 1800 authorized with use of FD or AP or HUD to DA.			

D-ATIS <b>126.95</b>	NORCAL APP CON <b>120.1 290.25</b>	SAN JOSE TOWER ★ <b>124.0 (CTAF) 0 257.6</b>	GND CON <b>121.7</b>	CLNC DEL <b>118.0</b>	CPDLC	UNICOM <b>122.95</b>
-------------------------	---------------------------------------	---	-------------------------	--------------------------	-------	-------------------------



REIL Rwy 12L  
HIRL Rwy 12L-30R and 12R-30L

1900 SJC R-303 *LOC only	ARTAQ INT FORUL I-SJC 4.2	VGSI and ILS glidepath not coincident (VGSI Angle 3.00/TCH 70).		JENES I-SJC 11.6 HIVAK I-SJC 9.6	ZULUP I-SJC 13.4 KLIDE I-SJC 16.7	4000
I-SJC 1.4 *I-SJC 3	1000* 1.6 NM	2700 1.2 NM	2700 5.3 NM	3200 2 NM	3600 1.8 NM	GS 3.00° TCH 54
CATEGORY	A	B	C	D		
S-ILS 30L#	257/24 200 (200-½)					
S-LOC 30L	640/24 583 (600-½)		640-1¼ 583 (600-1¼)			
SIDESTEP 30R	640-1 585 (600-1)		640-1¾ 585 (600-1¾)		640-2 585 (600-2)	

ILS or LOC RWY 30L