

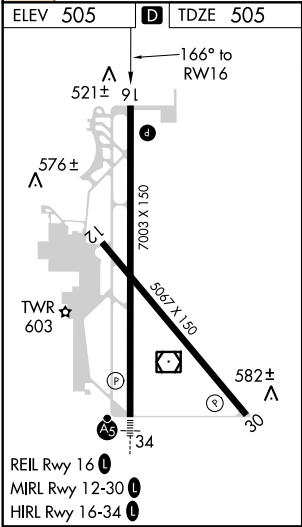
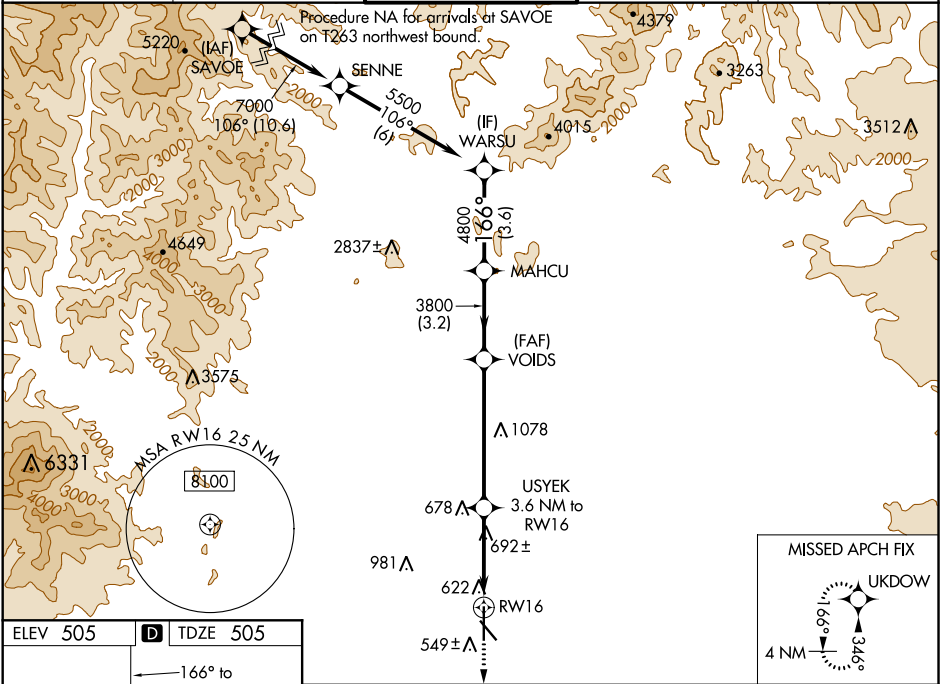
WAAS CH <b>86443</b> <b>W16A</b>	APP CRS <b>166°</b>	Rwy Idg <b>7003</b> TDZE <b>505</b> Apt Elev <b>505</b>
--	------------------------	---

RNAV (GPS) RWY 16

REDDING MUNI (RDD)

RNP APCH. ▼ Rwy 16 helicopter visibility reduction below ¾ SM NA. ▲ For uncompensated Baro-VNAV systems, LNAV/VNAV NA below -4°C or above 53°C.	MISSED APPROACH: Climb to 3000 direct UKDOW and hold.
---	---

ATIS <b>124.1</b>	OAKLAND CENTER <b>132.2 350.3</b>	REDDING TOWER ★ <b>119.8 (CTAF) 0 269.25</b>	GND CON <b>121.7</b>	UNICOM <b>122.95</b>
----------------------	--------------------------------------	---	-------------------------	-------------------------



ELEV 505 TDZE 505		3000 UKDOW				VGSI and RNAV glidepath not coincident (VGSI Angle 3.43/TCH 40).			
521± 91		*LNAV only.		*1.3 NM to RW16		USYEK 3.6 NM to RW16		MAHCU	
576±		RW16		1860*		VOIDS 3800		WARSU 5500	
TW R 603		1.3 NM		2.3 NM		5.3 NM		3.2 NM	
REIL Rwy 16		CATEGORY		A		B		C	
MIRL Rwy 12-30		LPV DA		755-¾		250 (300-¾)		775-⅞	
HIRL Rwy 16-34		LNAV/VNAV DA		892-1½		387 (400-1½)		GP 3.43° TCH 55	
		LNAV MDA		960-1		455 (500-1)		960-1¾	
		CIRCLING		960-1		1000-1		1120-1¾	
				455 (500-1)		495 (500-1)		615 (700-1¾)	
								1340-2¾	
								835 (900-2¾)	

SW-2, 03 DEC 2020 to 31 DEC 2020

SW-2, 03 DEC 2020 to 31 DEC 2020