

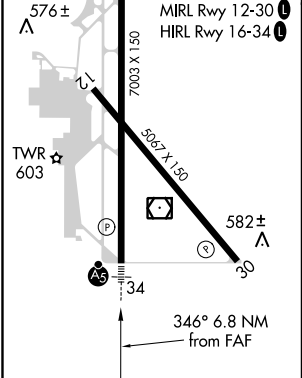
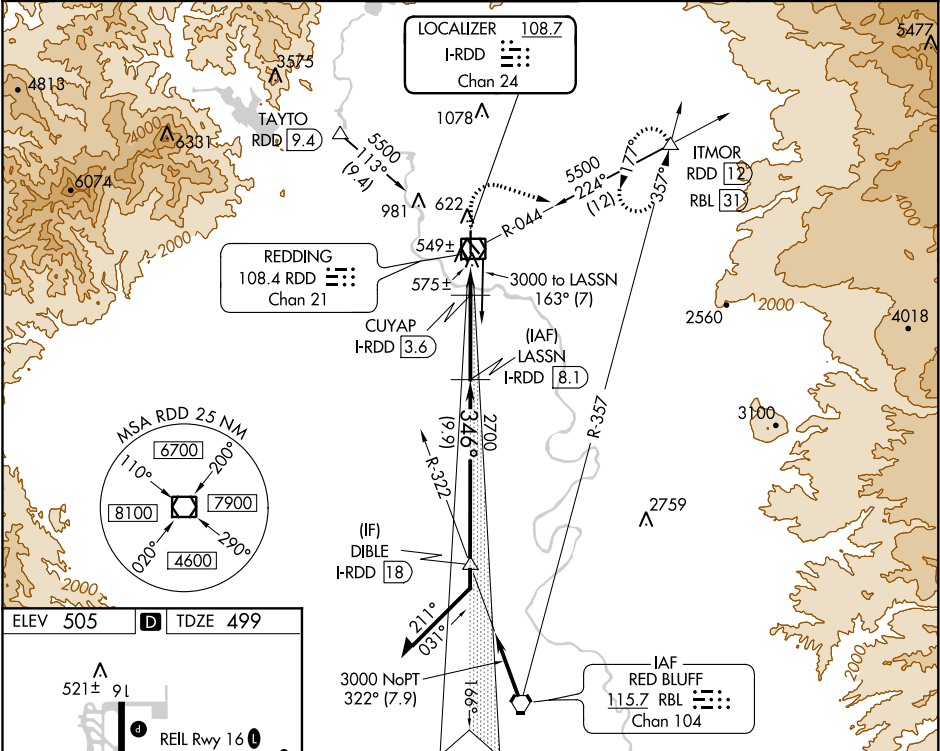
LOC/DME I-RDD	APP CRS	Rwy Idg	7003
<b>108.7</b>	<b>346°</b>	TDZE	499
Chan 24		Apt Elev	505

ILS or LOC RWY 34

REDDING MUNI (RDD)

DME required for LOC only.		MALSR 	MISSED APPROACH: Climb to 1700 then climbing right turn to 5000 on heading 090° and RDD R-044 to ITMOR INT/RDD 12 DME and hold, continue climb-in-hold to 5000.
	For inop ALS, increase S-ILS 34 Cat E visibility to ¾ SM and S-LOC 34 Cat C/D/E visibility to 1 SM.		

ATIS <b>124.1</b>	OAKLAND CENTER <b>132.2 350.3</b>	REDDING TOWER ★ <b>119.8(CTAF) 0 269.25</b>	GND CON <b>121.7</b>	UNICOM <b>122.95</b>
----------------------	--------------------------------------	--	-------------------------	-------------------------



1700 5000 ↑ hdg 090°	RDD R-044 △	ITMOR △	LASSN I-RDD [8.1]	VGSI and ILS glidepath not coincident. (VGSI Angle 3.00/TCH 55.)					
Use I-RDD DME when on the localizer course. * LOC only.				DIBLE I-RDD [18]	Remain within 15 NM				
I-RDD [1.3]			CUYAP I-RDD [3.6]	2700	166°	3000	3000		
2.3 NM			4.5 NM	9.9 NM	346°	2700	GS 3.00° TCH 52		
CATEGORY	A	B	C	D	E				
S-ILS 34	699-½ 200 (200-½)								
S-LOC 34	840-½	341 (400-½)	840-⅝ 341 (400-⅝)						
CIRCLING	940-1	1000-1	1120-1¾	1340-2¾	1340-3				
	435 (500-1)	495 (500-1)	615 (700-1¾)	835 (900-2¾)	835 (900-3)				