

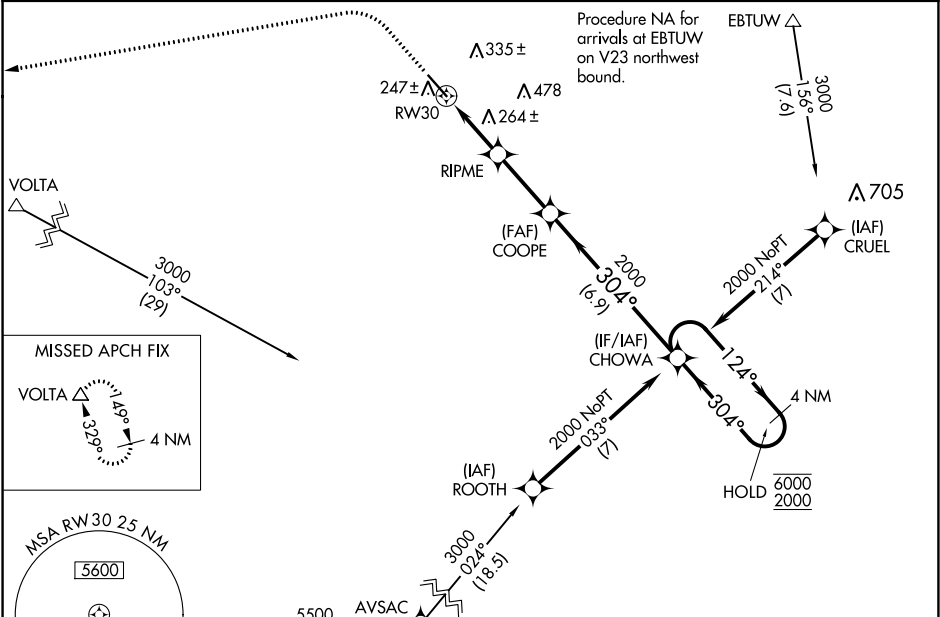
WAAS CH <b>93709</b> <b>W30A</b>	APP CRS <b>304°</b>	Rwy Idg TDZE <b>155</b> Apt Elev <b>155</b>
--	------------------------	---

RNAV (GPS) RWY 30

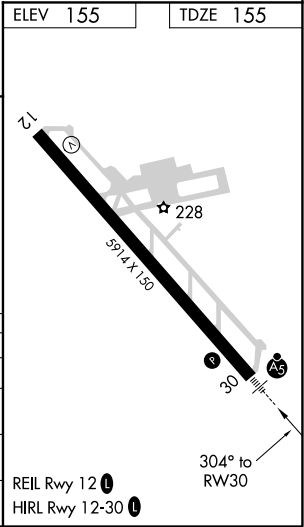
MERCED RGNL/MACREADY FIELD (MCE)

RNP APCH. <div>For uncompensated Baro-VNAV systems, LNAV/VNAV NA below -3°C or above 54°C. For inoperative ALS, increase LNAV Cats C/D visibility to 1 3⁄8 SM. Circling NA northeast of Rwy 12-30.</div>	MALSR 	MISSED APPROACH: Climb to 1000 then climbing left turn to 3000 direct VOLTA and hold.
---	-----------	---

ASOS <b>132.175</b>	NORCAL APP CON <b>120.95 269.45</b>	UNICOM <b>122.7 (CTAF) 0</b>
------------------------	--	---------------------------------



1000 3000 VOLTA		COOPE CHOWA 4 NM Holding Pattern	
*LNAV only		GP 3.00° TCH 53	
RW30		1100*	
1 NM		6.9 NM	
CATEGORY	A	B	C
LPV DA	355-1⁄2		200 (200-1⁄2)
LNAV/VNAV DA	544-5⁄8		389 (400-5⁄8)
LNAV MDA	520-1⁄2	365 (400-1⁄2)	520-5⁄8 365 (400-5⁄8)
CIRCLING	560-1 405 (500-1)	620-1 465 (500-1)	620-1 1⁄2 465 (500-1 1⁄2) 720-2 565 (600-2)



SW-2, 03 DEC 2020 to 31 DEC 2020

SW-2, 03 DEC 2020 to 31 DEC 2020