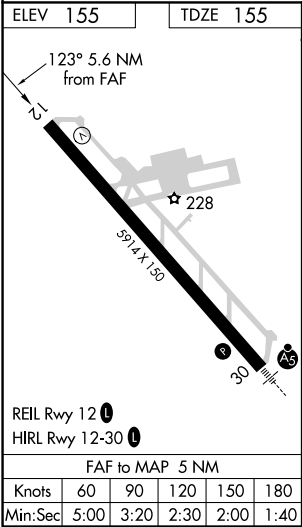
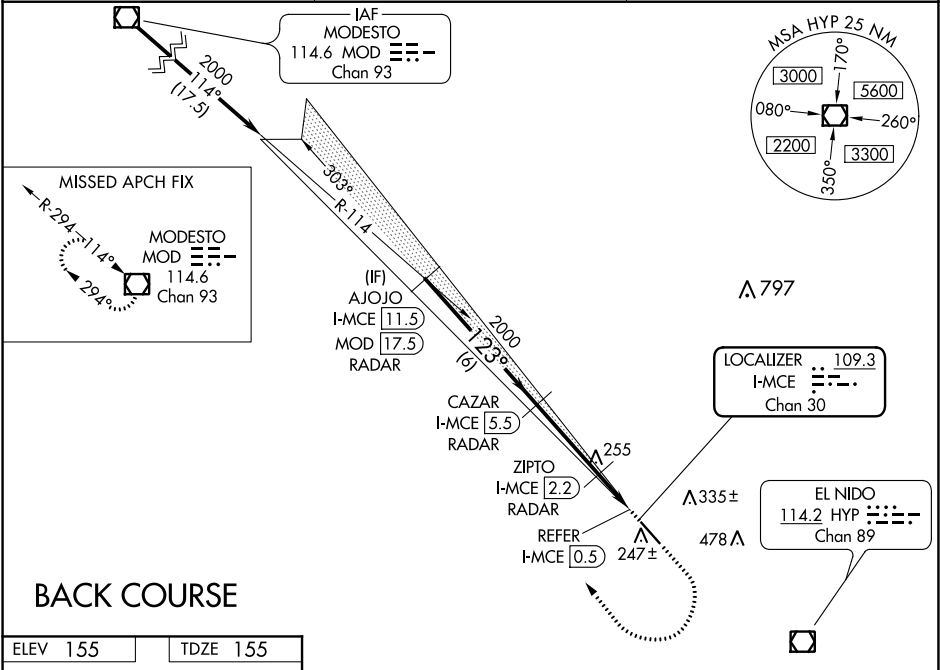


LOC/DME I-MCE 109.3 Chan 30	APP CRS 123°	Rwy Idg TDZE 155 Apt Elev 155	5914
---	------------------------	---	-------------

LOC BC RWY 12
MERCED RGNL/MACREADY FIELD (MCE')

DME or RADAR required.	MISSED APPROACH: Climb to 1000 then climbing right turn to 3000 direct MOD VOR/DME and hold.
▼ Rwy 12 helicopter visibility reduction below ¾ SM NA. ▲ NA Circling NA northeast of Rwy 12-30.	

ASOS 132.175	NORCAL APP CON 120.95 269.45	UNICOM 122.7 (CTAF) 0
------------------------	--	---------------------------------



	AJOJO I-MCE [11.5] RADAR	CAZAR I-MCE [5.5] RADAR	ZIPTO I-MCE [2.2] RADAR	1000 3000 MOD
	2000	2000	640	I-MCE [0.9] REFER I-MCE [0.5]
Disregard glide slope indications.				
	6 NM	3.3 NM	1.3 NM	0.4 NM 0.6 NM
CATEGORY	A	B	C	D
S-12	640-1	485 (500-1)	640-1 ½	485 (500-1 ½)
CIRCLING	640-1	485 (500-1)	640-1 ½ 485 (500-1 ½)	720-2 565 (600-2)
ZIPTO FIX MINIMUMS				
S-12	520-1 365 (400-1)	NA		
CIRCLING	560-1 405 (500-1)	620-1 465 (500-1)	620-1 ½ 465 (500-1 ½)	720-2 565 (600-2)