

LOC I-VIS

108.5

APP CRS

301°

Rwy Idg

5635

TDZE

295

Apt Elev

295

ILS or LOC RWY 30

VISALIA MUNI (VIS)

DME required.

▼

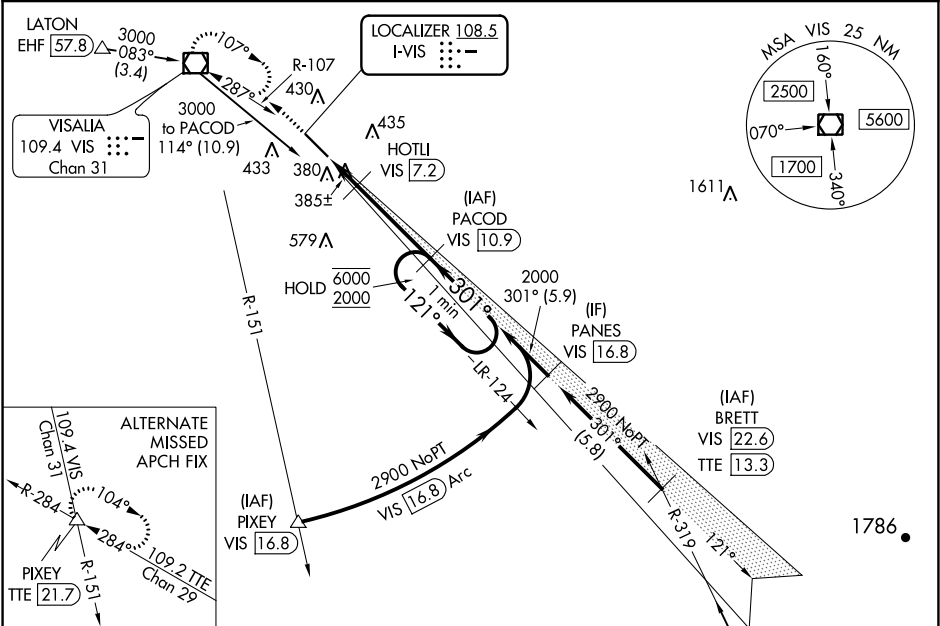
▲

DME from VIS VOR/DME.
Simultaneous reception of I-VIS and VIS DME required.
For inop ALS, increase S-LOC 30 Cat C/D visibility to 1 SM.

MALSR

MISSED APPROACH: Climb to 1000 then climbing left turn to 3000 direct VIS VOR/DME and hold, continue climb-in-hold to 3000.

AWOS-3PT 119.925	FRESNO APP CON 118.5	CLNC DEL 118.5	UNICOM 123.05 (CTAF) 0
---------------------	-------------------------	-------------------	---------------------------



ELEV 295

D

TDZE 295

Procedure NA for arrivals at TTE VOR/DME on V165-459 southeast bound.

TULE

109.2 TTE

Chan 29

301° 5.2 NM from FAF

REIL Rwy 12

HIRL Rwy 12-30

<div> <div>1000</div> <div>3000</div> <div>VIS</div> </div>	<div> <div>PACOD VIS 10.9</div> <div>One Minute Holding Pattern</div> </div>		<div> <div>121° → 6000</div> <div>← 301° 2000</div> <div>GS 3.00° TCH 53</div> </div>	
<div> <div>*LOC only.</div> <div>*VIS 6.7</div> <div>VIS 5.8</div> </div>	<div> <div>2000</div> <div>301°</div> <div>820*</div> <div>0.9 NM</div> <div>0.6 NM</div> <div>3.7 NM</div> </div>			
CATEGORY	A	B	C	D
S-ILS 30	502-½	345 (400-½)	207 (300-½)	
S-LOC 30	640-½	345 (400-½)	640-⅝	345 (400-⅝)
CIRCLING	720-1	760-1	760-1½	940-2
	425 (500-1)	465 (500-1)	465 (500-1½)	645 (700-2)