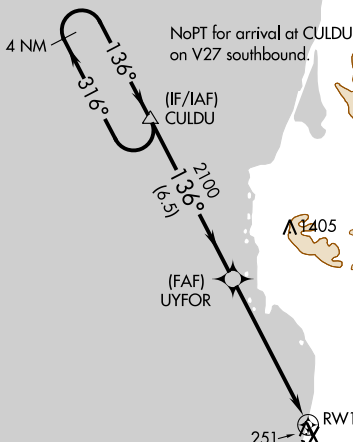
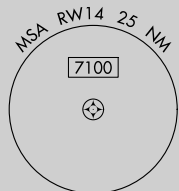


Rwy Idg	<b>5601</b>
TDZE	<b>205</b>
Apt Elev	<b>222</b>

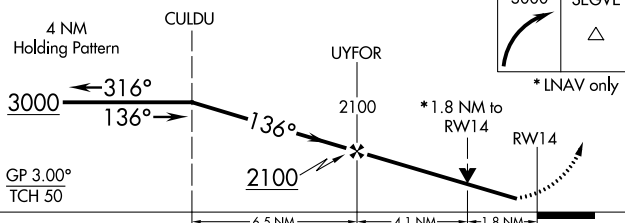
## CALIFORNIA REDWOOD COAST-HUMBOLDT COUNTY (ACV)


**MISSED APPROACH:**  
Climbing right turn to 3000  
direct SEGVE and hold.

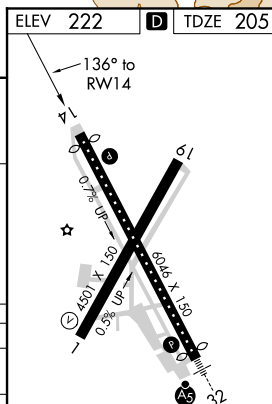
UNICOM  
123.0 (CTAF) **L**



MISSED APCH FIX



CATEGORY	A	B	C	D
LPV DA	455/45 250 (300-7%)			
LNAV/VNAV DA	570-1¼ 365 (400-1¼)			
LNAV MDA	820/55 615 (600-1)		820-1¾ 615 (600-1¼)	
 CIRCLING	820-1 598 (600-1)		840-1¾ 618 (700-1¾)	880-2 658 (700-2)



MIRL Rwy 1-19  
HIRL Rwy 14-32 **L**  
REIL Rwy 14 **L**  
REIL Rwy 1

## RNAV (GPS) RWY 14

SW-2, 03 DEC 2020 to 31 DEC 2020