

ILS or LOC RWY 3L

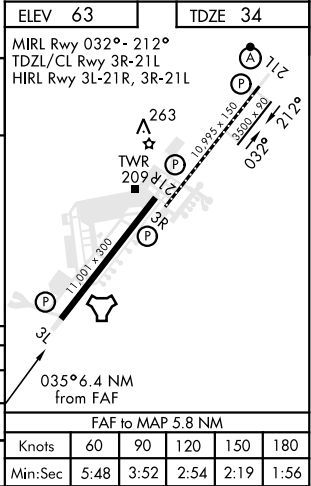
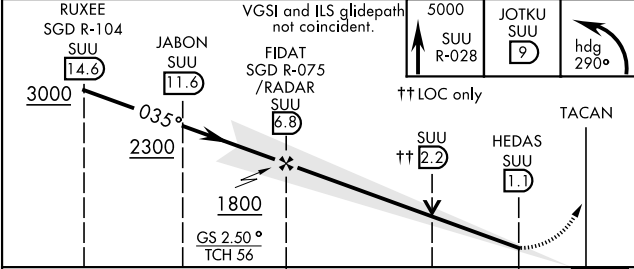
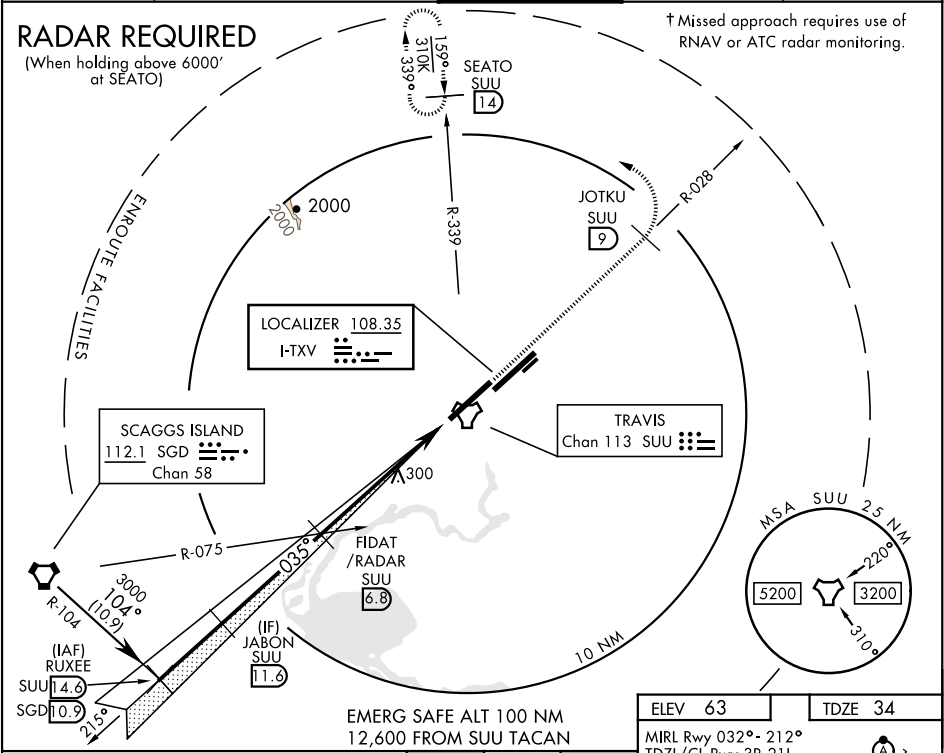
LOC I-TXV 108.35	APCH CRS 035°	Rwy Idg 11,001 TDZE 34 Arpt Elev 63
----------------------------	-------------------------	--

AL-488 [USAF]

TRAVIS AFB (KSUU)

▼ *When Rwy 3R VGSi inop, circling to Rwy 3R not authorized at night. Circling not authorized NW of Rwy 3L-21R.	† MISSED APPROACH: Climb to 5000 on SUU R-028 to JOTKU. Then climbing left turn heading 290°, intercept SUU R-339 to SEATO and hold, continue climb and hold to 5000.
--	---

ATIS 135.55 292.125	TRAVIS APP CON 119.9 (S) 126.6 (N) 281.45	TRAVIS TOWER 120.75 254.4	GND CON 121.8 289.4	CLNC DEL 127.55 335.8
-------------------------------	---	-------------------------------------	-------------------------------	---------------------------------



CATEGORY	A	B	C	D	E
S-ILS 3L	234/40		200	(200-¾)	
S-LOC 3L	560/55	526 (500-1)	560-1½	526	(500-1½)
✶ CIRCLING*	560-1 497 (500-1)	580-1 517 (600-1)	1100-3 1037(1100-3)	1200-3	1137 (1200-3)

ILS or LOC RWY 3L

SW-2, 03 DEC 2020 to 31 DEC 2020

SW-2, 03 DEC 2020 to 31 DEC 2020