


## ILS or LOC RWY 21L

LOC I-SUU <b><u>110.1</u></b>	APCH CRS <b>215°</b>	Rwy Idg <b>10,995</b> TDZE <b>58</b> Arpt Elev <b>63</b>
----------------------------------	-------------------------	--

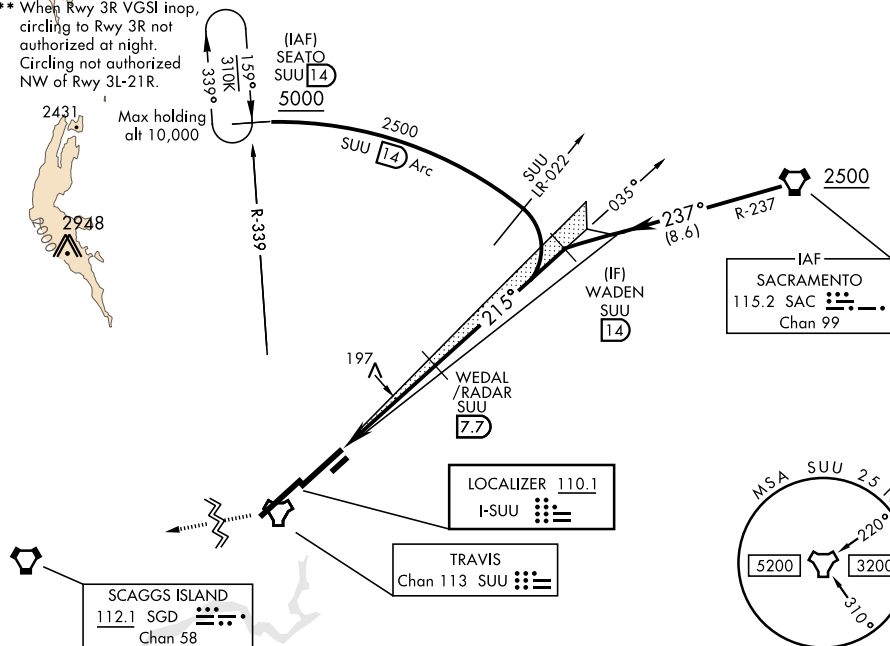
AL-488 [USAF]

TRAVIS AFB (KSUU)

<b>▼ * When ALS inop, increase all CATs RVR to 40, vis to <math>\frac{3}{4}</math> miles.</b> <b>When TDZL/CL inop, increase all CATs RVR to 24.</b>				<b>ALSF-2</b> 		<b>MISSED APPROACH:</b> Climb straight ahead to SUU TACAN then turn right direct SGD VORTAC climbing to 4400. Expect further clearance prior to SGD.			
<b>ATIS</b> <b>135.55 292.125</b>		<b>TRAVIS APP CON</b> <b>119.9 (S) 126.6 (N) 281.45</b>		<b>TRAVIS TOWER</b> <b>120.75 254.4</b>		<b>GND CON</b> <b>121.8 289.4</b>		<b>CLNC DEL</b> <b>127.55 335.8</b>	

\*\* When ALS inop, increase CAT AB RVR to 55 and vis to 1 mile, CAT CDE vis to 1 3/8 mile.

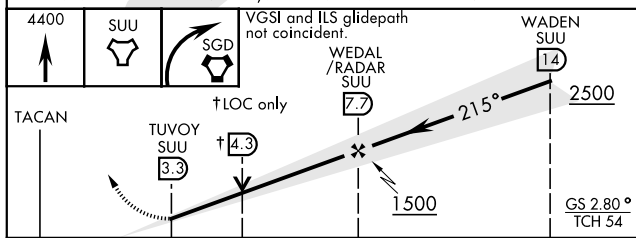
\*\*\* When Rwy 3R VGSi inop,  
circling to Rwy 3R not  
authorized at night.  
Circling not authorized  
NW of Rwy 3L-21R.



## ATC RADAR REQUIRED

(Except for full approach from SAC)

EMERG SAFE ALT 100 NM 12.600 FROM "SUU" TACAN



	0.2 NM	4.4 NM			
CATEGORY	A	B	C	D	E
S-ILS 21L *	258/18		200	(200-½)	
S-LOC 21L **	500/24	442 (500-½)	500/45	442	(500- 7/8)
<b>C</b> CIRCLING ***	540-1 477 (500-1)	580-1 517 (600-1)	1100-3 1037(1100-3)	1200-3	1137 (1200-3)

