

WAAS CH 53343 W32B	APP CRS 322°	Rwy Idg TDZE Apt Elev	9006 31 37
--	------------------------	-----------------------------	---------------------------------------

RNAV (GPS) RWY 32R
MOFFETT FEDERAL AFLD (NUQ)

RNP APCH. ▼ For uncompensated Baro-VNAV systems, LNAV/VNAV NA below 0°C or above 54°C. For inop ALS, increase LNAV/VNAV all Cats visibility to 1½ SM and LNAV Cat C/D visibility to 1½ SM. ▲	MALSR AS	MISSED APPROACH: Climb to 3200 direct PEYIC and hold.
--	-------------	--

ATIS 124.175 283.0	NORCAL APP CON 120.1 290.25	MOFFETT TOWER ★ 119.55 0 (CTAF) 259.65	GND CON 121.85 278.95	CLNC DEL 296.75
------------------------------	---------------------------------------	--	---------------------------------	---------------------------

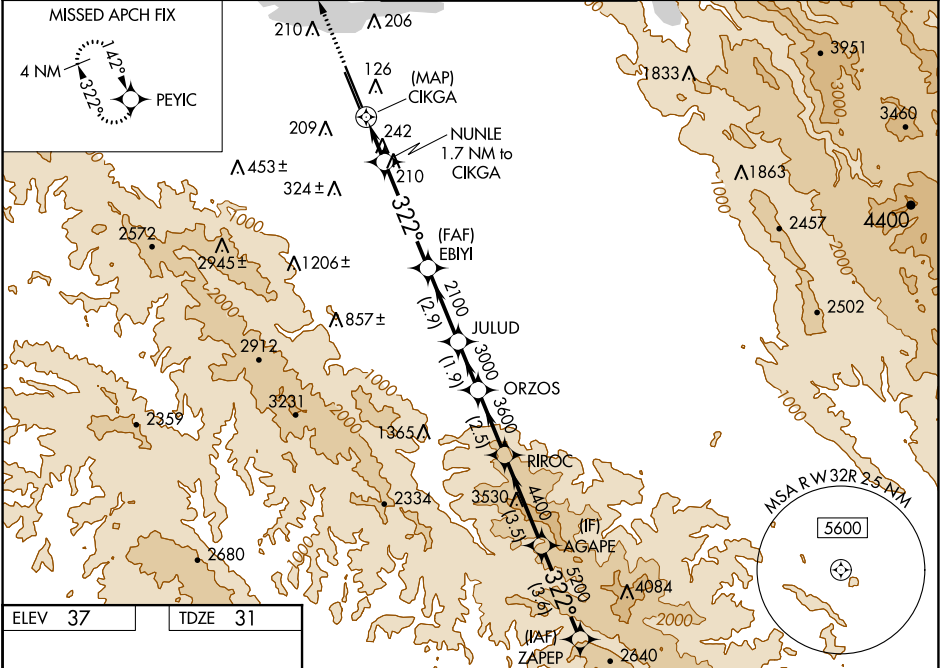


Diagram of the runway layout showing Runway 14L, Runway 14R, Runway 32L, and Runway 32R. The diagram includes dimensions and elevations for each runway.

REIL Rwy 14L
HIRL Rws 14L-32R and 14R-32L

3200	PEYIC								
↑	✦	NUNLE 1.7 NM to CIKGA	EBIYI 2100	JULUD	ORZOS	RIROC	AGAPE	ZAPEP	5500
*LNAV only		*0.8 NM to CIKGA							
3200		780*	2100	3000	3600	4400	5200		
0.5	0.8	0.9	4.1 NM	2.9 NM	1.9 NM	2.5 NM	3.5 NM	3.6 NM	GP 3.00° TCH 57
CATEGORY	A	B	C	D					
LPV DA	231-½	200 (200-½)							
LNAV/ VNAV DA	442-¾	411 (500-¾)							
LNAV MDA	500-½ 469 (500-½)		500-1 469 (500-1)						
CIRCLING	540-1 503 (600-1)	600-1 563 (600-1)	620-1½ 583 (600-½)	780-2½ 743 (800-2½)					