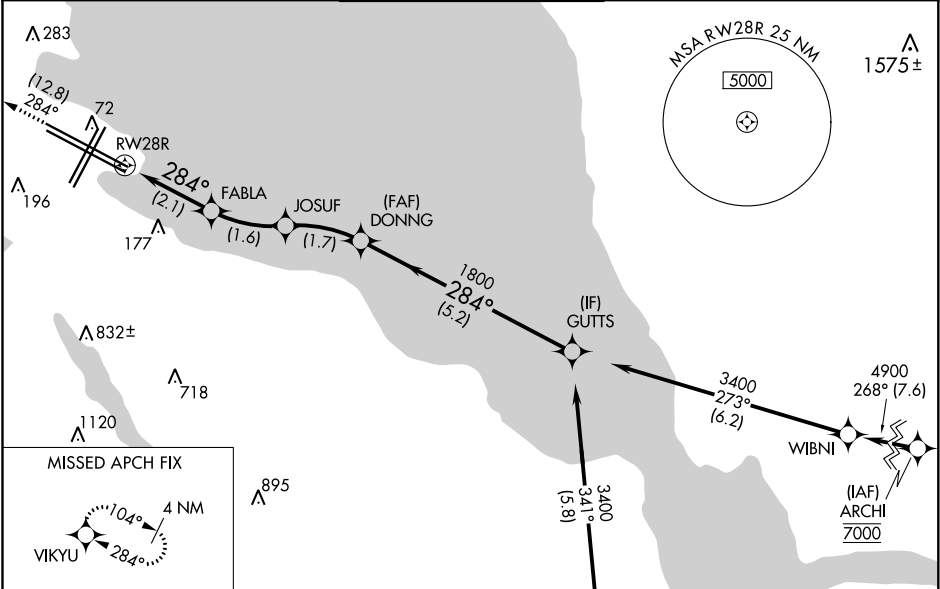


APP CRS	Rwy Idg	11236
284°	TDZE	13
	Apt Elev	13

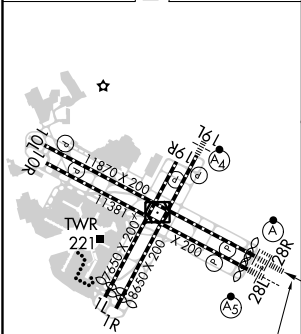
RNAV (RNP) Y RWY 28R
SAN FRANCISCO INTL (SFO)

RNP AR APCH, RF required.	ALSF-2	MISSED APPROACH: Climb to 3000 on track 284° to VIKYU and hold. * Missed approach requires minimum climb of 250 feet per NM to 1600. # Missed approach requires minimum climb of 350 feet per NM to 2100.
▼ For uncompensated Baro-VNAV systems, procedure NA below 3°C or above 54°C. For inop ALS, increase RNP 0.11 all Cats visibility to RVR 4000 and RNP 0.30 all Cats visibility to RVR 4500.		


D-ATIS 113.7 115.8 118.85	NORCAL APP CON 134.5 338.2	SAN FRANCISCO TOWER 120.5 269.1	GND CON 121.8	CLNC DEL 118.2	CPDLC
---------------------------------	-------------------------------	------------------------------------	------------------	-------------------	-------



ELEV 13	D	TDZE 13
---------	---	---------



TDZ/CL Rwy 19L and 28R
REIL Rwy 1L, 1R and 10L
HIRL all Rwy

<div>3000 ↑ fr 284°</div> <div></div> <div>VGSI and RNAV glidepath not coincident (VGSI Angle 3.00°/TCH 68)</div> <div>GUTTS</div>				
<div>RW28R</div> <div>284°</div> <div>2.1 NM</div> <div>743</div> <div>FABLA</div> <div>1.6 NM</div> <div>1264</div> <div>JOSUF</div> <div>1.7 NM</div> <div>1800</div> <div>DONNG</div> <div>5.2 NM</div> <div>3400</div> <div>GP 3.00° TCH 55</div>				
CATEGORY	A	B	C	D
RNP 0.11 DA*	263/24		250 (300-½)	
RNP 0.30 DA#	326/24		313 (400-½)	

AUTHORIZATION REQUIRED

SW-2, 03 DEC 2020 to 31 DEC 2020

SW-2, 03 DEC 2020 to 31 DEC 2020