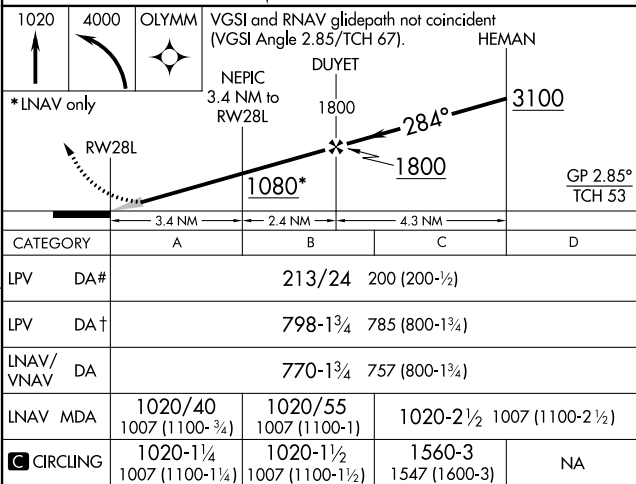


20310

RNAV (GPS) RWY 28L  
SAN FRANCISCO INTL (SFO)

**MISSED APPROACH:** Climb to 1020 then climbing left turn to 4000 direct OLYMM and hold, continue climb-in-hold to 4000. #Missed approach requires minimum climb of 330 feet per NM to 1600.

ELEV 13	<b>D</b>	TDZE 13
---------	----------	---------

SAN FRANCISCO INTL (SFO)  
RNAV (GPS) RWY 28L

SW-2, 03 DEC 2020 to 31 DEC 2020