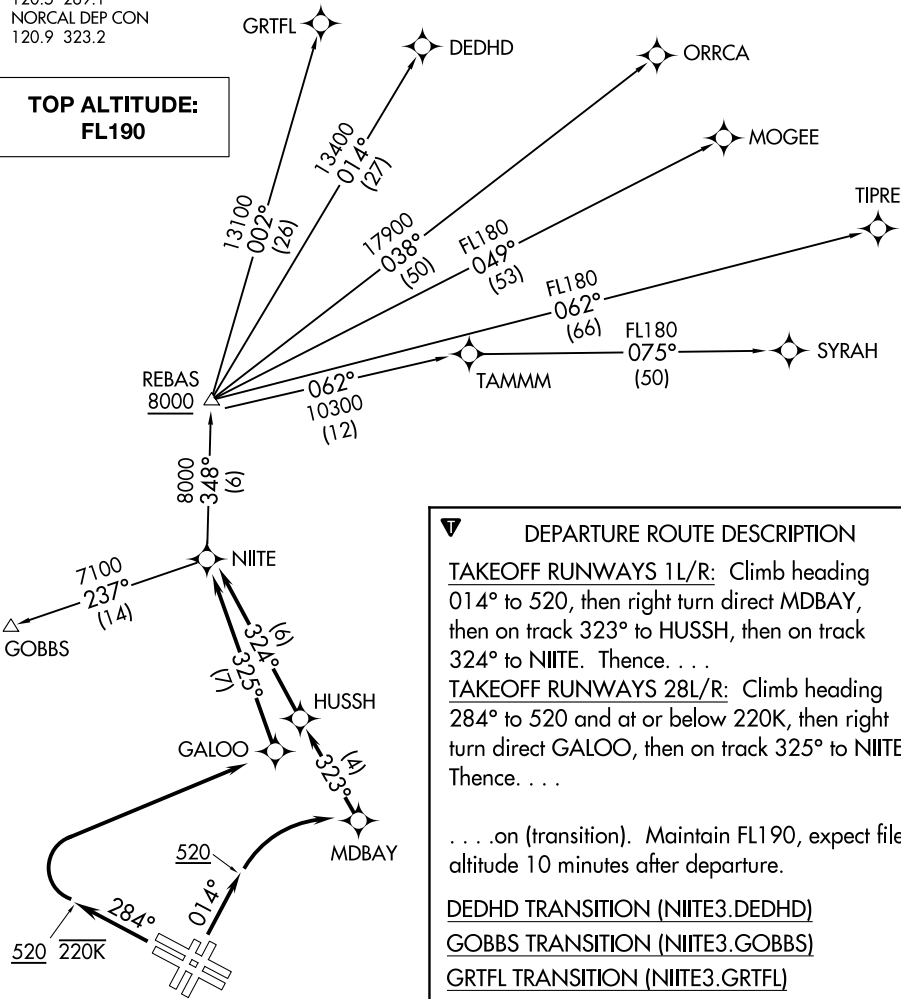


D-ATIS
113.7 115.8 118.85
CLNC DEL
118.2
CPDLC
GND CON
121.8
SAN FRANCISCO TOWER
120.5 269.1
NORCAL DEP CON
120.9 323.2

TAKEOFF MINIMUMS

Rwys 1L/R: Standard with a minimum climb of 500' per NM to 520.
Rwy 28L: Standard with minimum climb of 535' per NM to 2100.
Rwy 28R: Standard with minimum climb of 560' per NM to 2100.

TOP ALTITUDE:
FL190



NOTE: RNAV 1.
NOTE: RADAR required.
NOTE: DME/DME/IRU or GPS required.

NOTE: Chart not to scale.

DEPARTURE ROUTE DESCRIPTION

TAKEOFF RUNWAYS 1L/R: Climb heading 014° to 520, then right turn direct MDBAY, then on track 323° to HUSSH, then on track 324° to NIITE. Thence. . . .
TAKEOFF RUNWAYS 28L/R: Climb heading 284° to 520 and at or below 220K, then right turn direct GALOO, then on track 325° to NIITE. Thence. . . .

. . . .on (transition). Maintain FL190, expect filed altitude 10 minutes after departure.

- DEDHD TRANSITION (NIITE3.DEDHD)
- GOBBS TRANSITION (NIITE3.GOBBS)
- GRNFL TRANSITION (NIITE3.GRNFL)
- MOGEE TRANSITION (NIITE3.MOGEE)
- ORRCA TRANSITION (NIITE3.ORRCA)
- SYRAH TRANSITION (NIITE3.SYRAH)
- TIPRE TRANSITION (NIITE3.TIPRE)