

SAN FRANCISCO, CALIFORNIA

AL-375 (FAA)

(A) LDA PRM RWY 28R  
(SIMULTANEOUS CLOSE PARALLEL)  
SAN FRANCISCO INTL (SFO)

LOC/DME I-FNP <b>110.75</b> Chan <b>44</b> (Y)	APP CRS <b>281°</b>	Rwy Idg TDZE Apt Elev	<b>11236</b> <b>13</b> <b>13</b>
------------------------------------------------------	------------------------	-----------------------------	----------------------------------------

**T** Simultaneous approach authorized with ILS PRM RWY 28L and RNAV (GPS) PRM  
**A** **NA** RWY 28L. Procedure NA when glideslope not available. Dual VHF comm required.  
See additional requirements on AAUP. Runway 28L and 28R separated by 750 feet  
centerline to centerline. Inoperative table does not apply. DME required. Localizer  
course 1183 feet right of RWY 28R threshold.

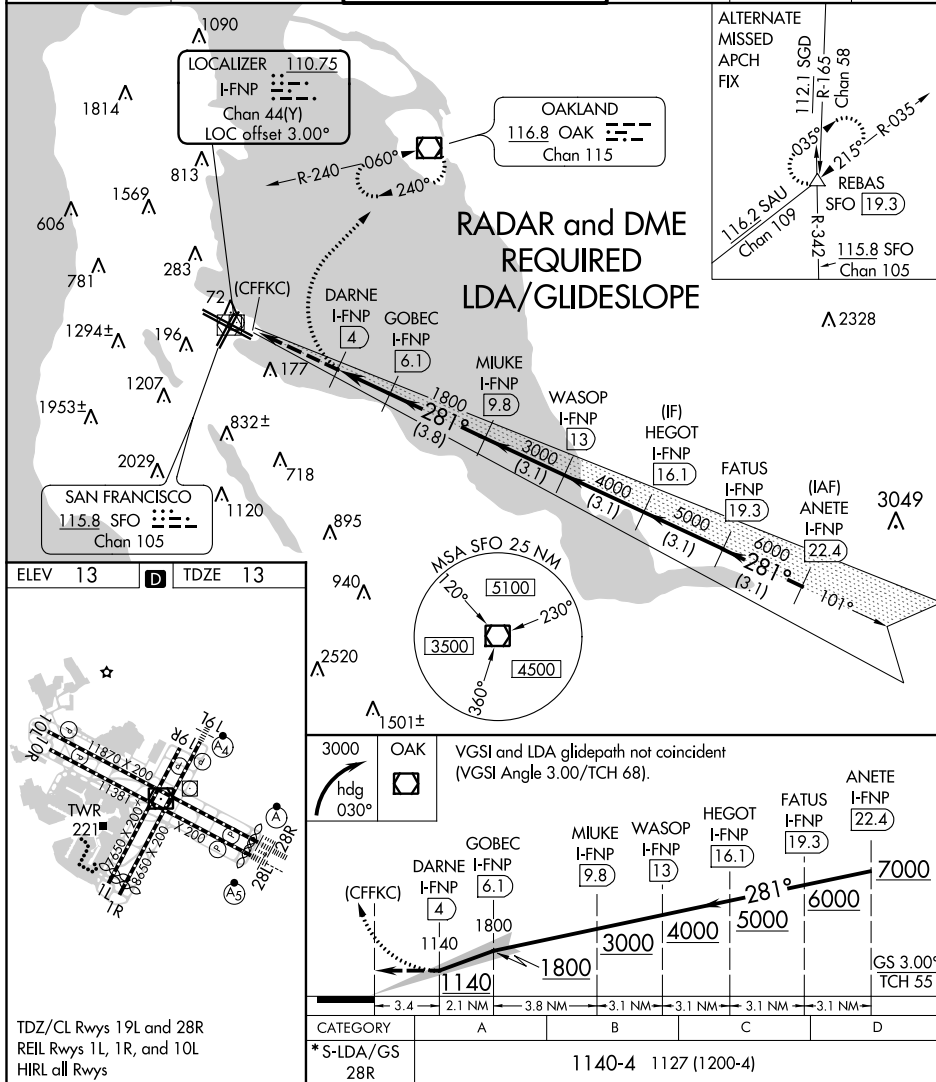
\*If go around executed after passing DARNE, go around requires minimum climb of 380 feet per NM to 1800.

ALSF-2



**MISSED APPROACH:**  
Climbing right turn to  
3000 on heading 030°  
then direct OAK VOR/  
DME and hold.

D-ATIS 113.7 115.8 118.85	NORCAL APP CON 134.5 338.2	SAN FRANCISCO TOWER 120.5 269.1 PRM 127.675	GND CON 121.8	CLNC DEL 118.2	CPDLC
---------------------------------	-------------------------------	---------------------------------------------------	------------------	-------------------	-------



SAN FRANCISCO, CALIFORNIA  
Amdt 2B 13OCT16

37°37'N-122°23'W

SAN FRANCISCO INTL (SFO)

## LDA PRM RWY 28R (SIMULTANEOUS CLOSE PARALLEL)

SW-2, 03 DEC 2020 to 31 DEC 2020

SW-2, 03 DEC 2020 to 31 DEC 2020