


LOC/DME I-SFO 109.55 Chan 32 (Y)	APP CRS 284°	Rwy Idg TDZE Apt Elev	10275 13 13
---	------------------------	-----------------------------	--

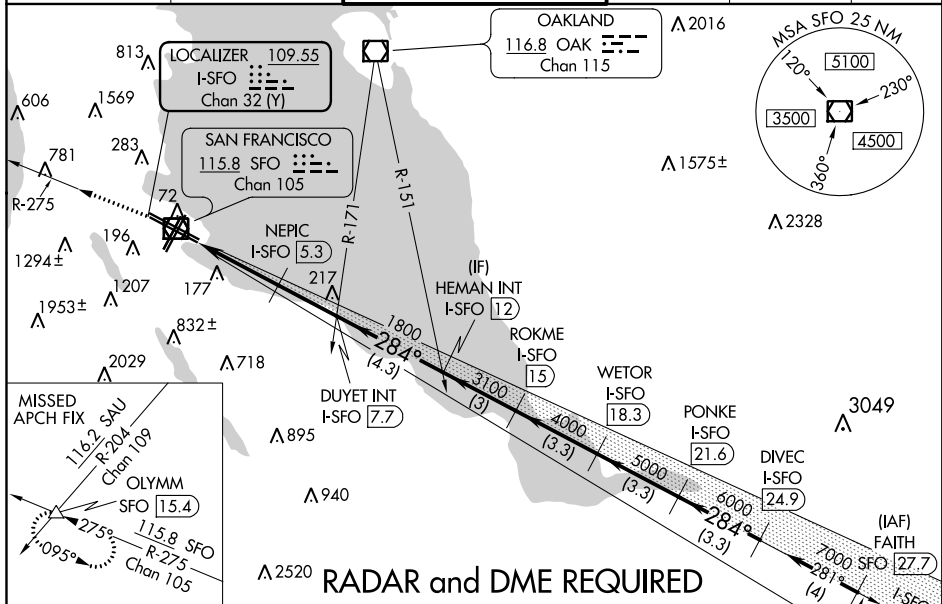
ILS PRM RWY 28L

(SIMULTANEOUS CLOSE PARALLEL)

SAN FRANCISCO INTL (SFO)

<p>▼ NA</p> <p>Rwy 28L and 28R separated by 750 feet centerline to centerline. DME required. Missed approach requires minimum climb of 325 feet per NM to 2100; if unable to meet climb gradient, see ILS or LOC RWY 28L. RVR 1800 authorized with the use of FD or AP or HUD to DA. Simultaneous Close Parallel approach authorized with LDA PRM RWY 28R and RNAV (GPS) PRM X RWY 28R. Procedure NA when glide slope not available. Dual VHF comm required. See additional requirements on AAUP.</p>	<p>MALSR</p> 	<p>MISSED APPROACH: Climb to 4000 on SFO VOR/DME R-275 to OLYMM INT/SFO 15.4 DME and hold.</p>
---	--	--

D-ATIS 113.7 115.8 118.85	NORCAL APP CON 134.5 338.2	SAN FRANCISCO TOWER 120.5 269.1 PRM 125.15	GND CON 121.8	CLNC DEL 118.2	CPDLC
---	--------------------------------------	--	-------------------------	--------------------------	-------



ELEV 13	D	TDZE 13
<p>ALTERNATE MISSED APCH FIX</p> <p>SAN JOSE SJC 114.1 Chan 88</p> <p>OLYMM</p> <p>VGSI and ILS glidepath not coincident (VGSI Angle 2.85/TCH 67).</p> <p>Use I-SFO DME when on the LOC course.</p> <p>4000</p> <p>SFO R-275</p> <p>DUYET INT I-SFO (7.7)</p> <p>NEPIC I-SFO (5.3)</p> <p>HEMAN INT I-SFO (12)</p> <p>ROKME I-SFO (15)</p> <p>WETOR I-SFO (18.3)</p> <p>PONKE I-SFO (21.6)</p> <p>DIVEC I-SFO (24.9)</p> <p>284°</p> <p>7000</p> <p>GS 2.85° TCH 53</p> <p>3.3 NM 2.4 NM 4.3 NM 3 NM 3.3 NM 3.3 NM 3.3 NM</p> <p>CATEGORY A B C D</p> <p>S-ILS 28L 213/24 200 (200-½)</p>		