

LOC/DME I-GWQ 111.7 Chan 54	APP CRS 284°	Rwy Idg 11236 TDZE 13 Apt Elev 13
---	------------------------	--

ILS RWY 28R (SA CAT I)
SAN FRANCISCO INTL (SFO)

RNAV 1-GPS or RADAR required for procedure entry.

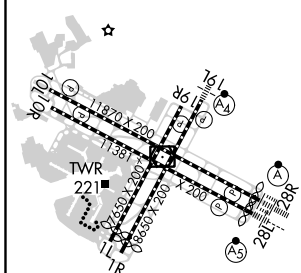
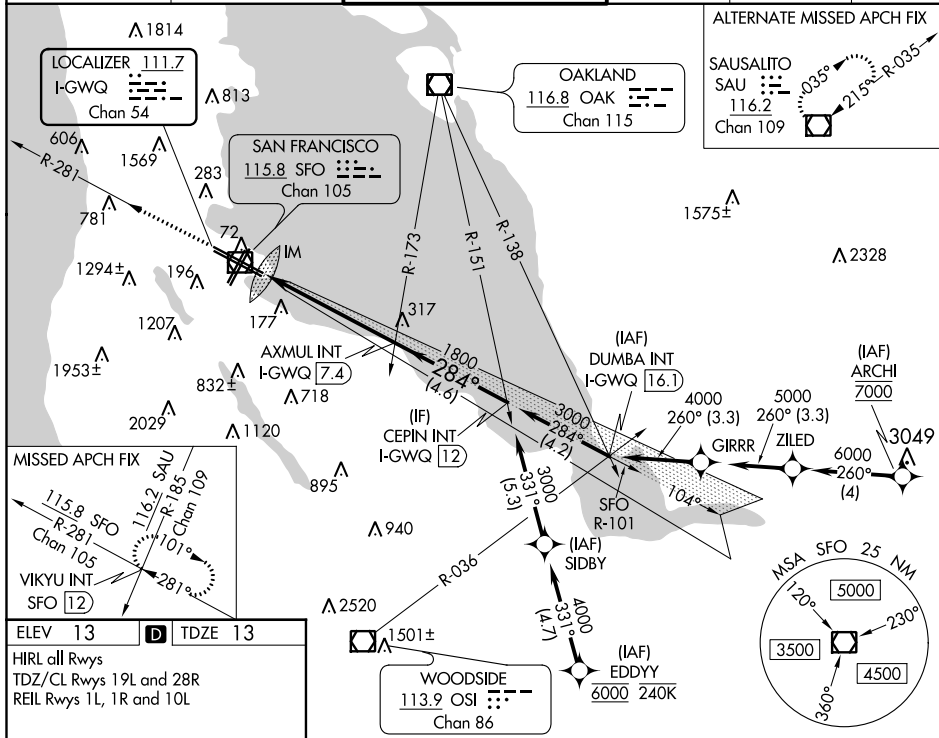
ALSF-2

MISSED APPROACH: Climb to 3000 on SFO VOR/DME R-281 to VIKYU INT/SFO 12 DME and hold.

*Missed approach requires minimum climb of 350 feet per NM to 1900; if unable to meet climb gradient, see ILS or LOC RWY 28L.

Requires specific OPSPEC, MSPEC, or LOA approval and use of HUD to DH.

D-ATIS 113.7 115.8 118.85	NORCAL APP CON 134.5 338.2	SAN FRANCISCO TOWER 120.5 269.1	GND CON 121.8	CLNC DEL 118.2	CPDLC
---------------------------------	-------------------------------	------------------------------------	------------------	-------------------	-------



3000

↑

SFO R-281

VIKYU INT

VGSi and ILS glidepath not coincident
(VGSi Angle 3.00/TCH 68).

AXMUL INT
I-GWQ 7.4

CEPIN INT
I-GWQ 12

Use I-GWQ DME when on the
localizer course.

IM

1800

284°

3000

GS 3.00°
TCH 55

1065'

5.4 NM

4.6 NM

CATEGORY	A	B	C	D
S-ILS 28R*	RA 163/14 150 DA 163			

SA CATEGORY I ILS - SPECIAL AIRCREW
& AIRCRAFT CERTIFICATION REQUIRED